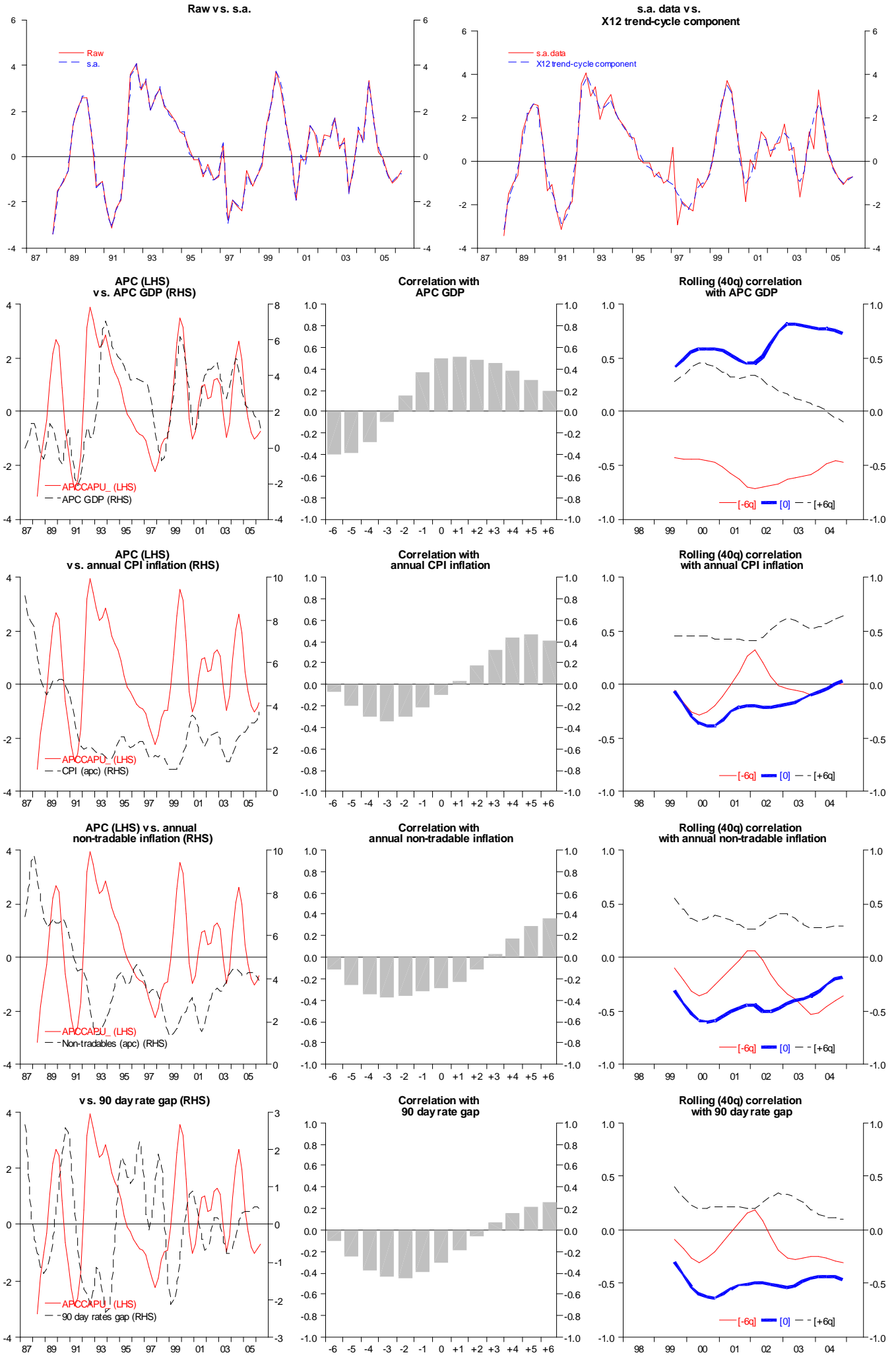


APC Capacity utilisation

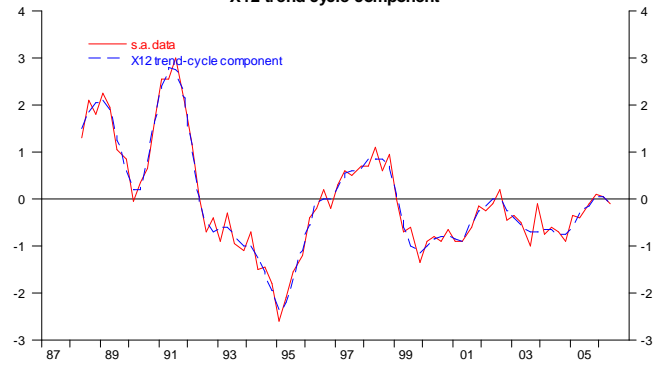


Annual change HLFS unemployment rate

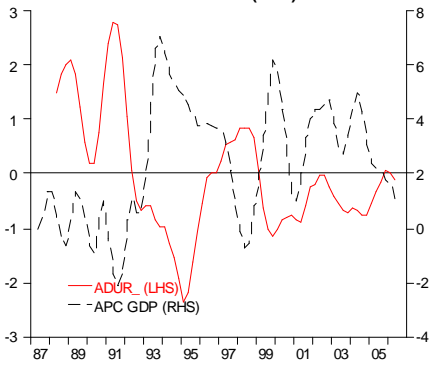
Raw vs. s.a.



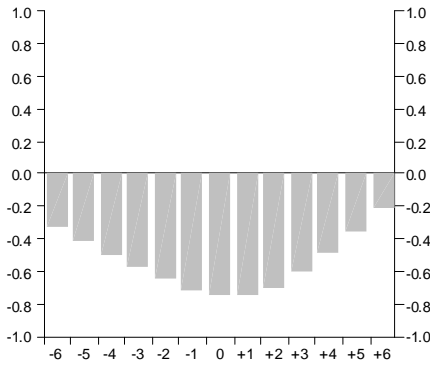
s.a. data vs. X12 trend-cycle component



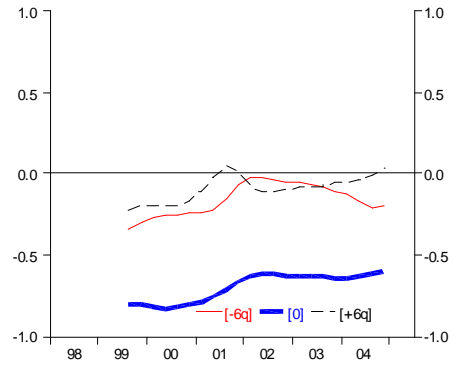
APC (LHS) vs. APC GDP (RHS)



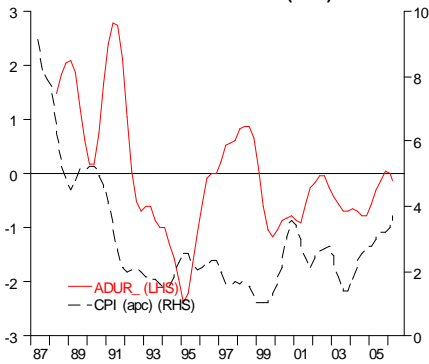
Correlation with APC GDP



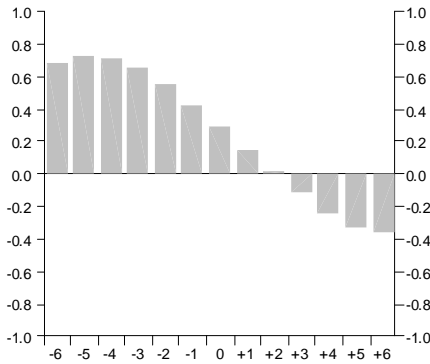
Rolling (40q) correlation with APC GDP



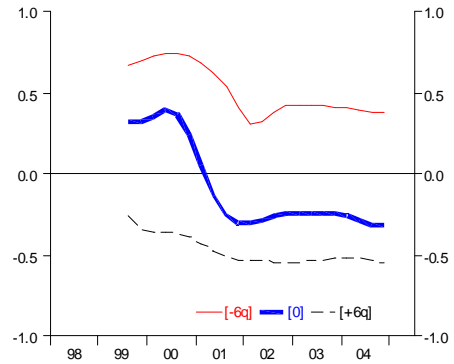
APC (LHS) vs. annual CPI inflation (RHS)



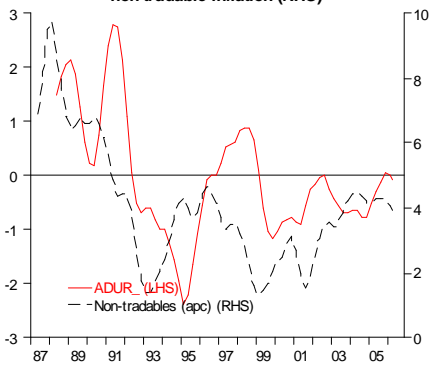
Correlation with annual CPI inflation



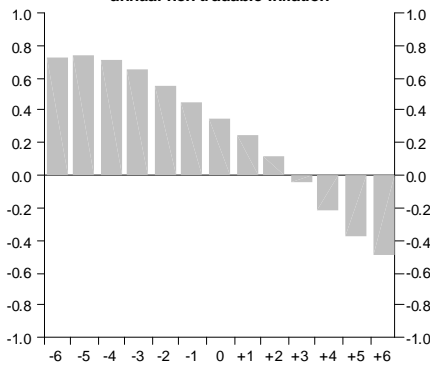
Rolling (40q) correlation with annual CPI inflation



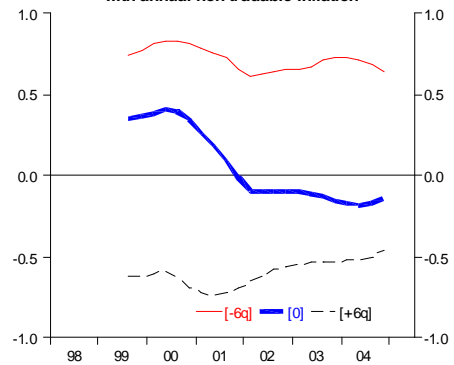
APC (LHS) vs. annual non-tradable inflation (RHS)



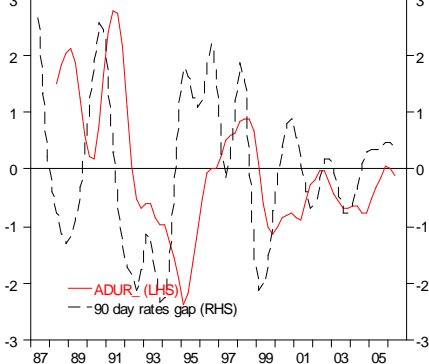
Correlation with annual non-tradable inflation



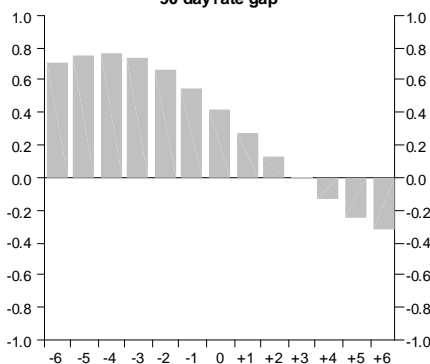
Rolling (40q) correlation with annual non-tradable inflation



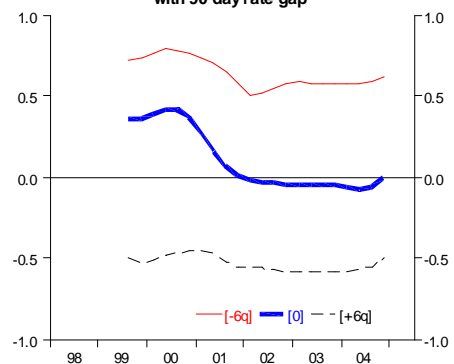
vs. 90 day rate gap (RHS)



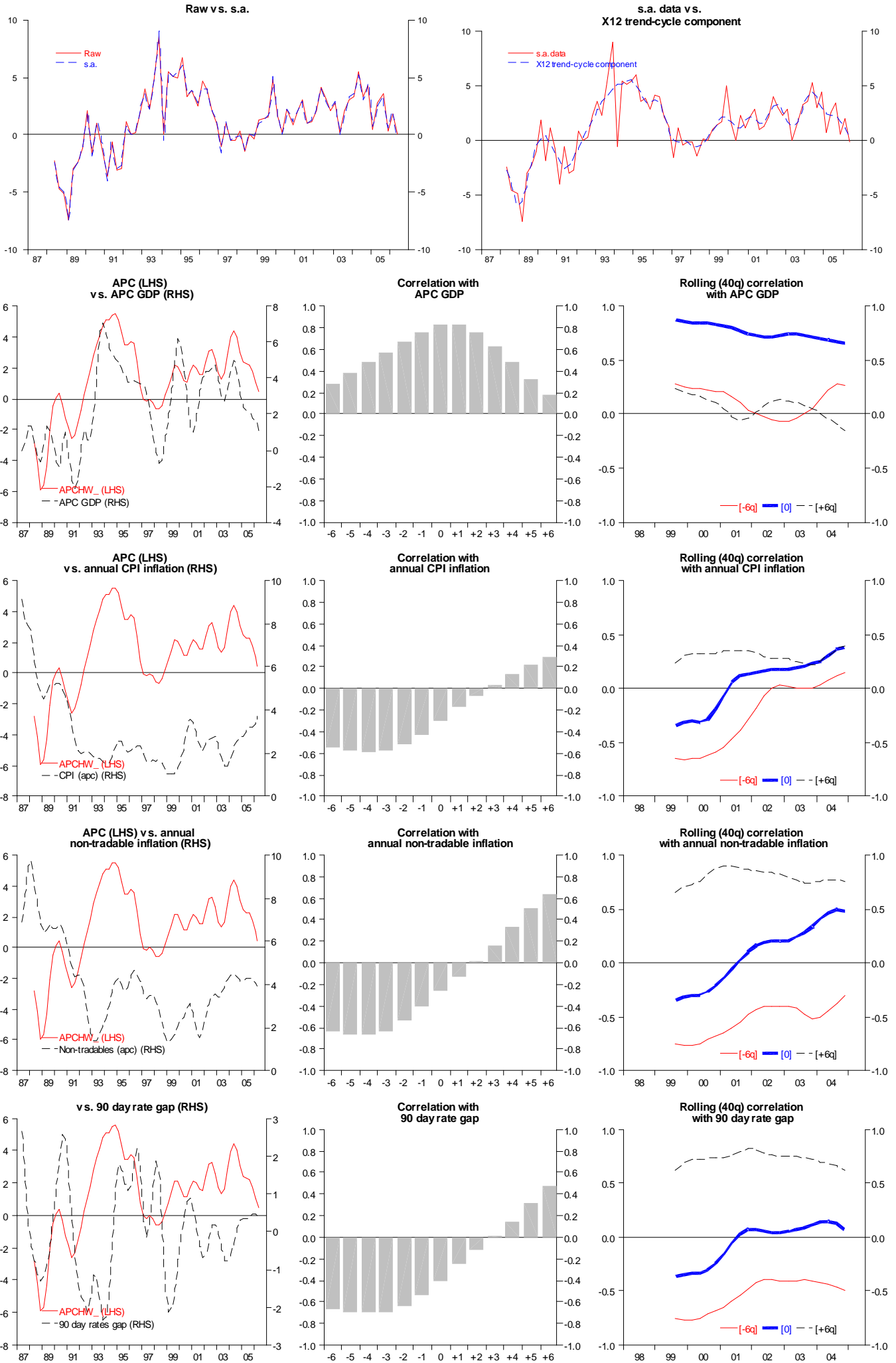
Correlation with 90 day rate gap



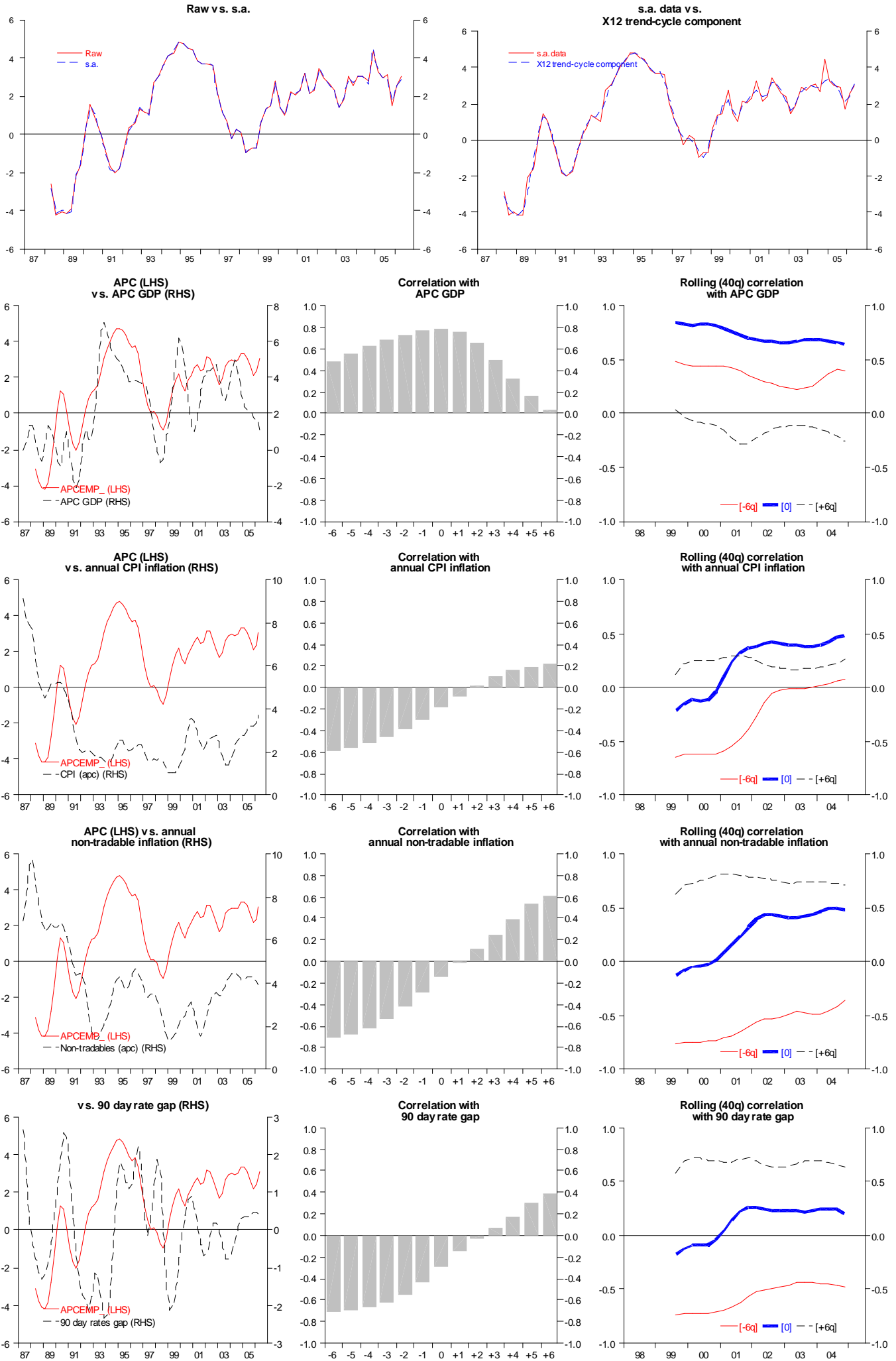
Rolling (40q) correlation with 90 day rate gap



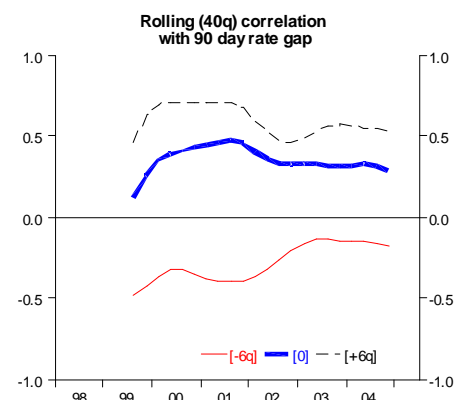
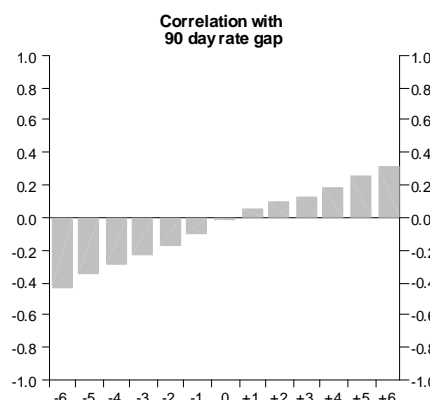
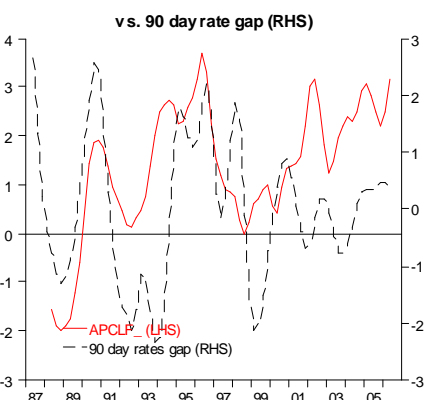
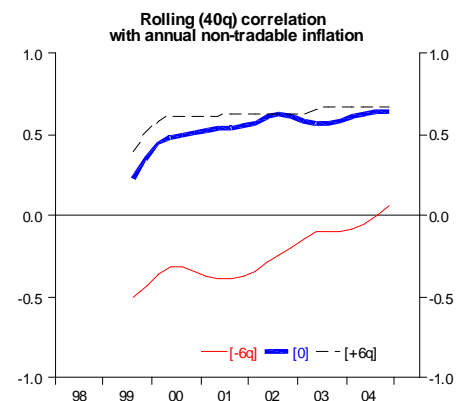
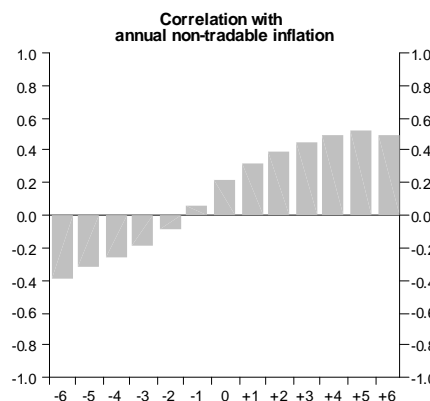
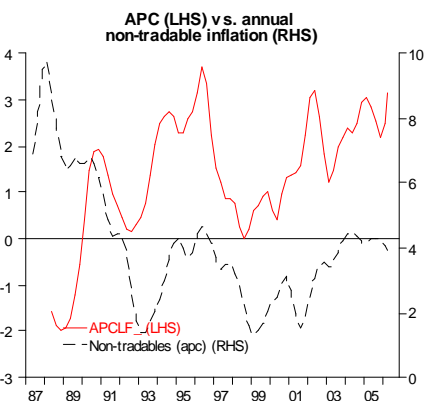
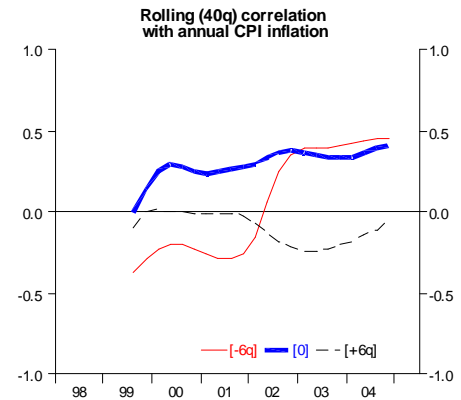
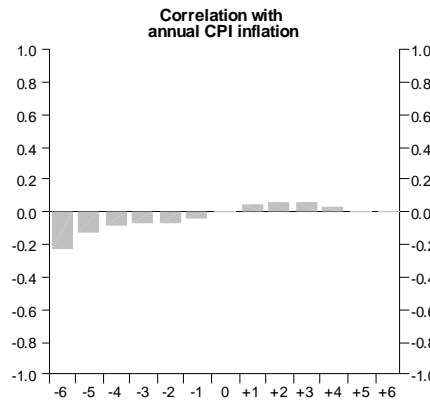
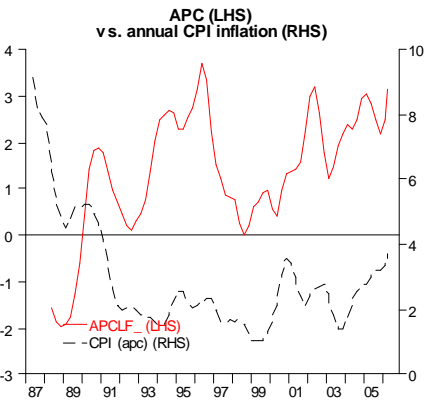
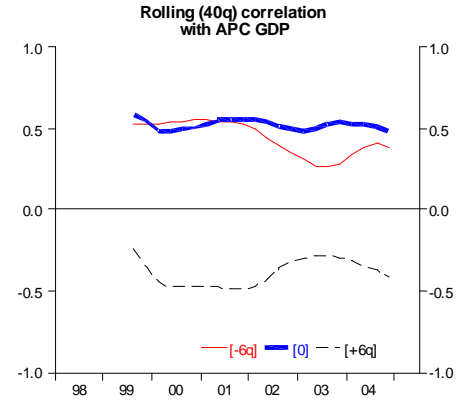
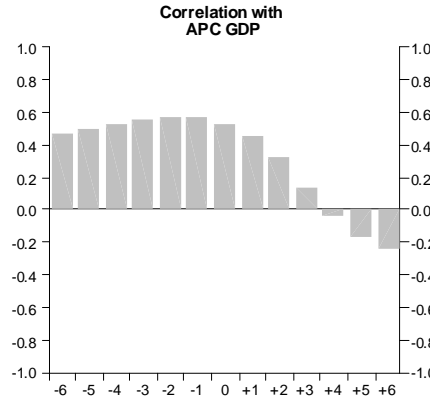
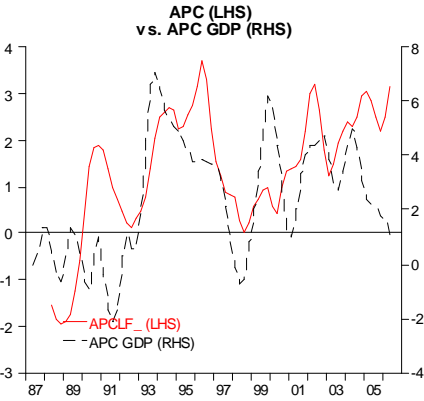
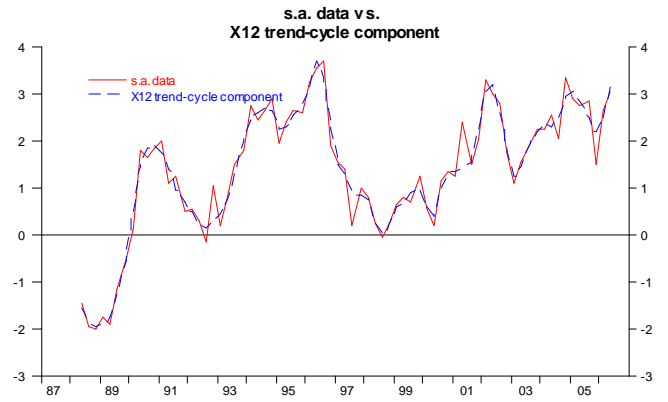
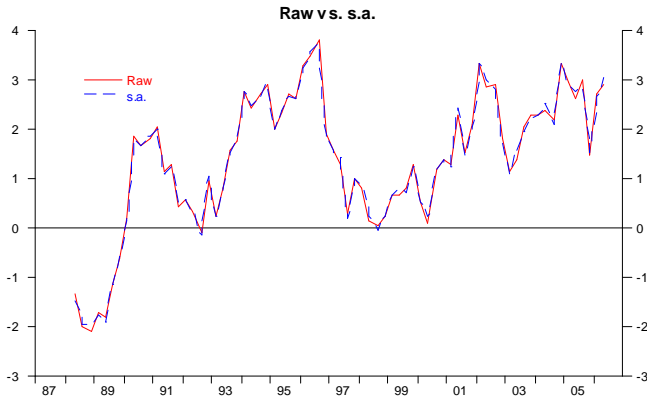
APC HLFS hours worked



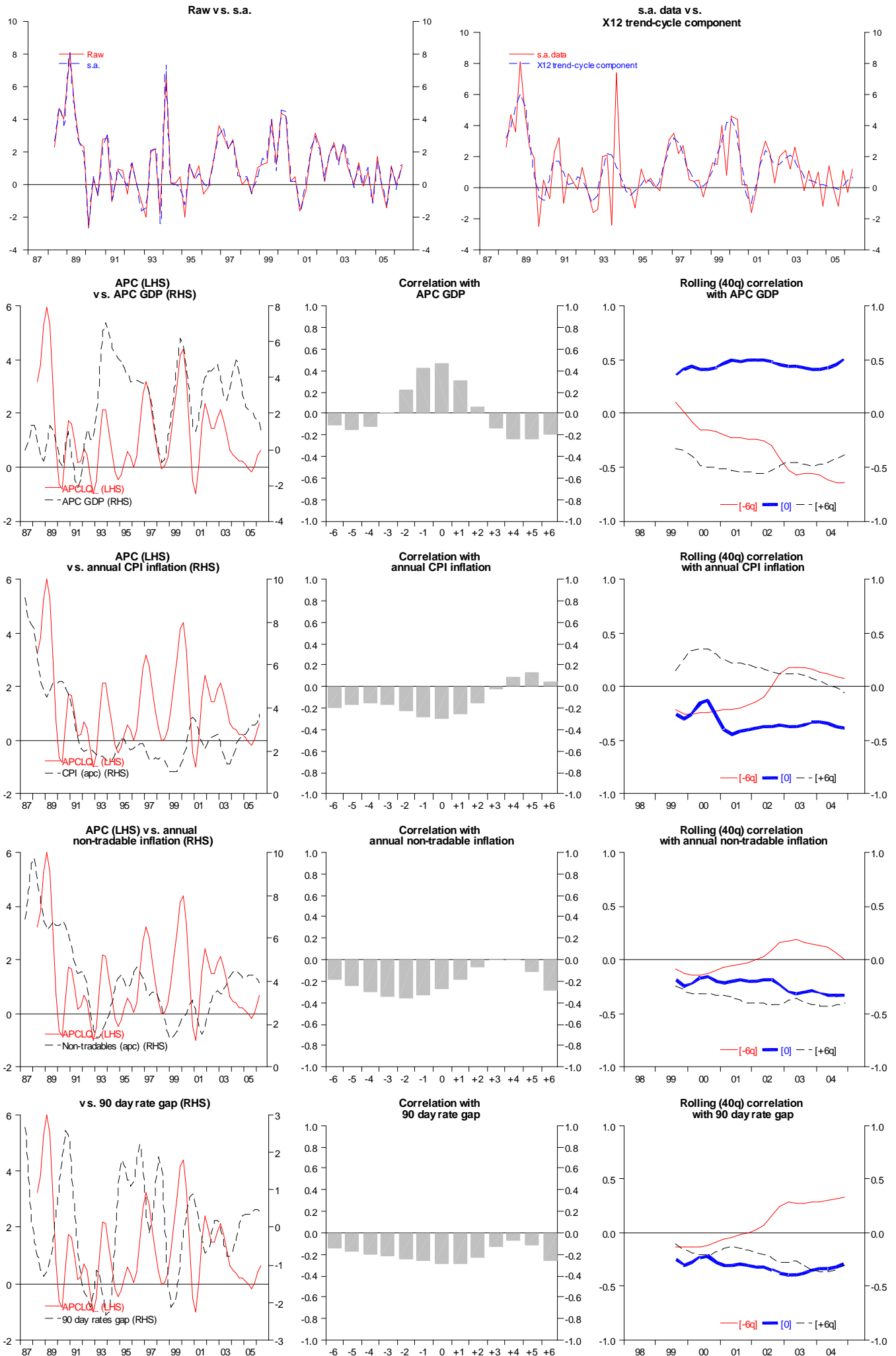
APC HLFS employment



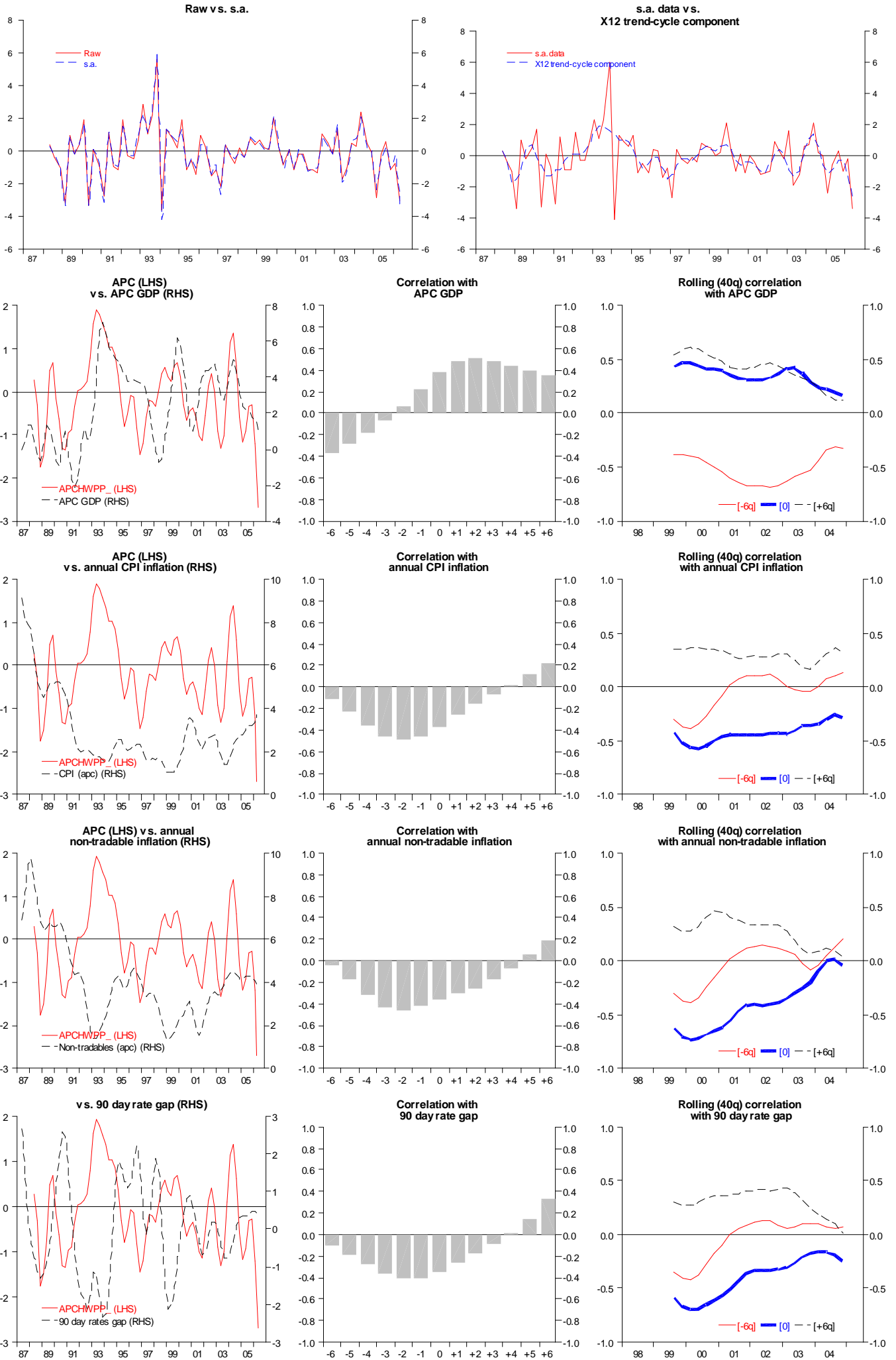
APC HLFS labour force



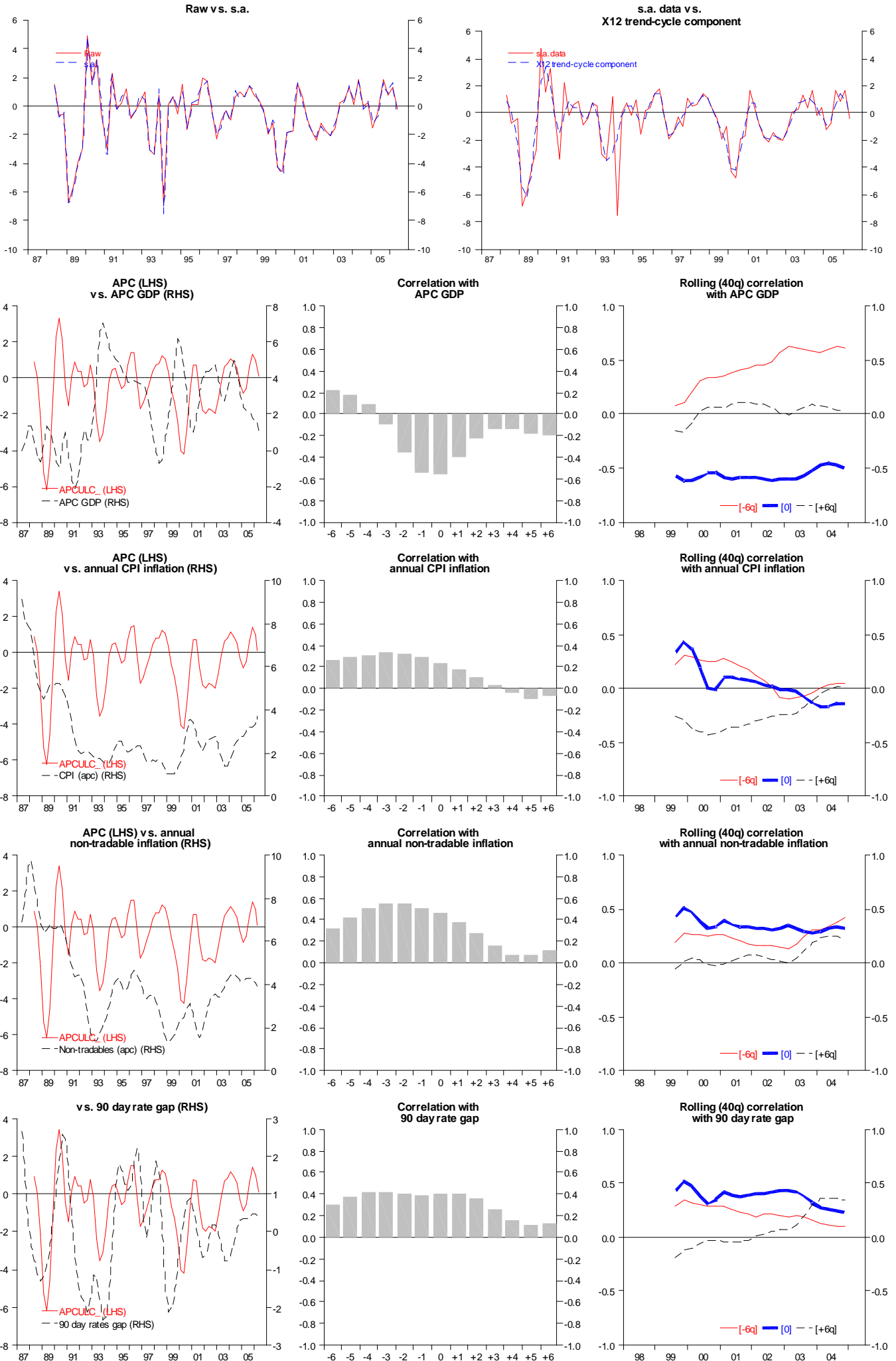
APC HLFS labour productivity (/hours worked)



APC hours worked per employee)



APC Unit labour costs (real wages/productivity)

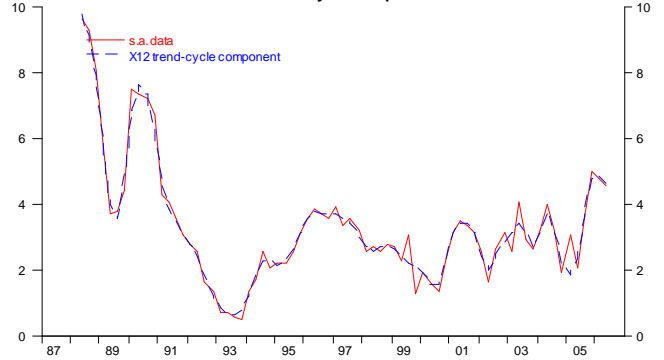


APC QES wages

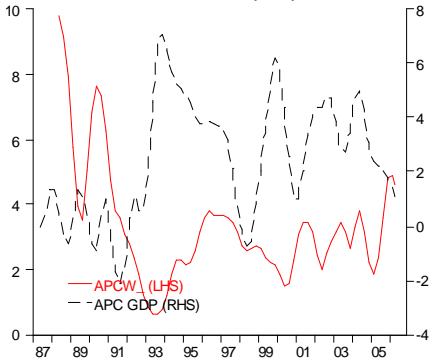
Raw vs. s.a.



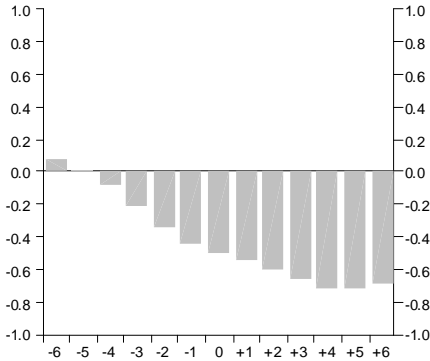
s.a. data vs. X12 trend-cycle component



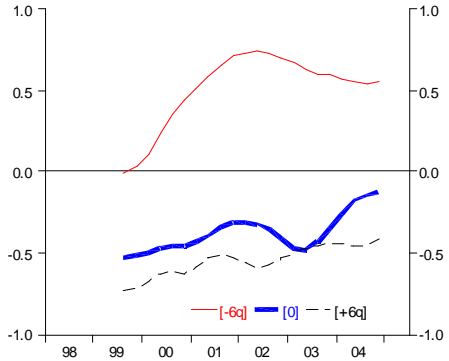
APC (LHS) vs. APC GDP (RHS)



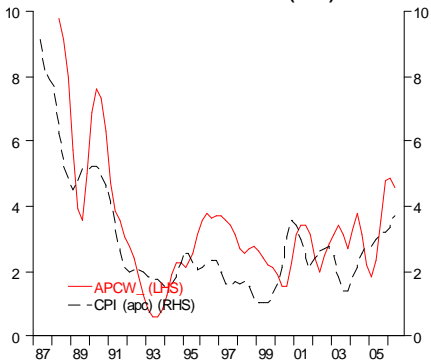
Correlation with APC GDP



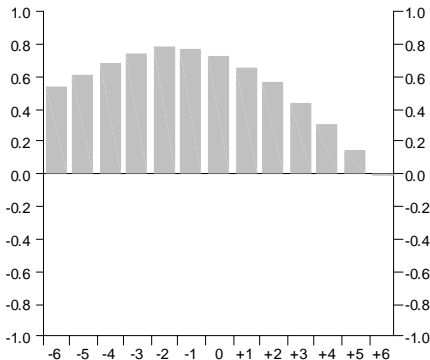
Rolling (40q) correlation with APC GDP



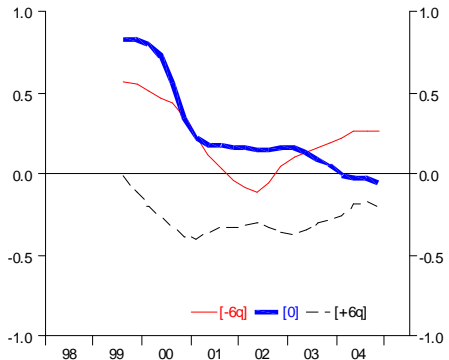
APC (LHS) vs. annual CPI inflation (RHS)



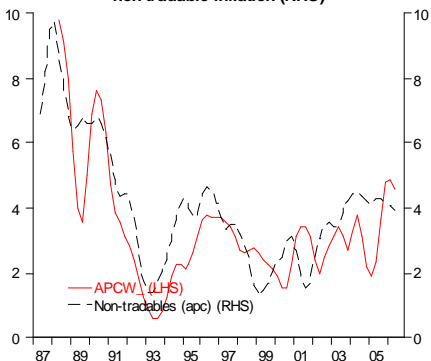
Correlation with annual CPI inflation



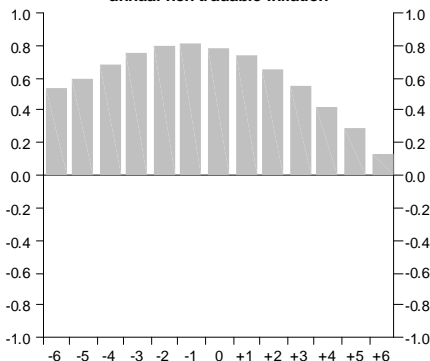
Rolling (40q) correlation with annual CPI inflation



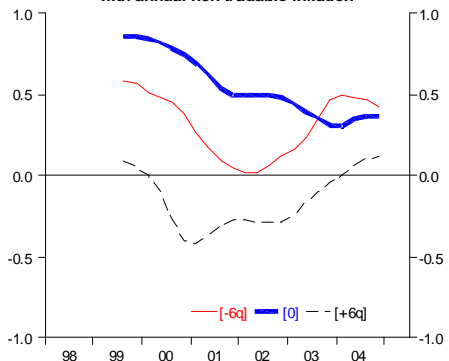
APC (LHS) vs. annual non-tradable inflation (RHS)



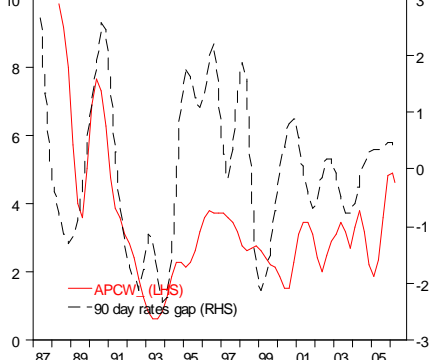
Correlation with annual non-tradable inflation



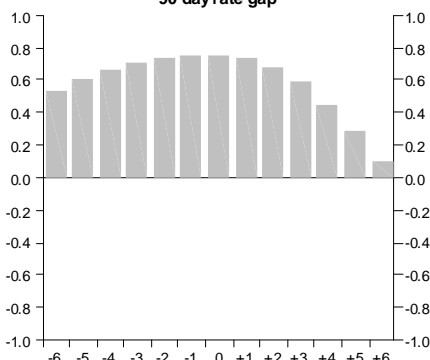
Rolling (40q) correlation with annual non-tradable inflation



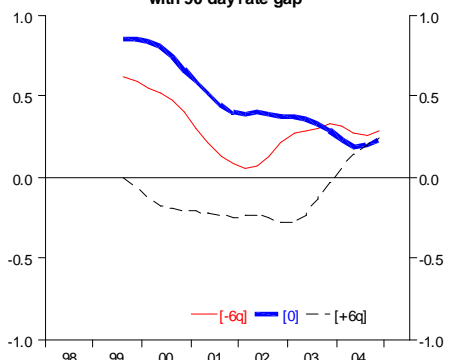
vs. 90 day rate gap (RHS)



Correlation with 90 day rate gap

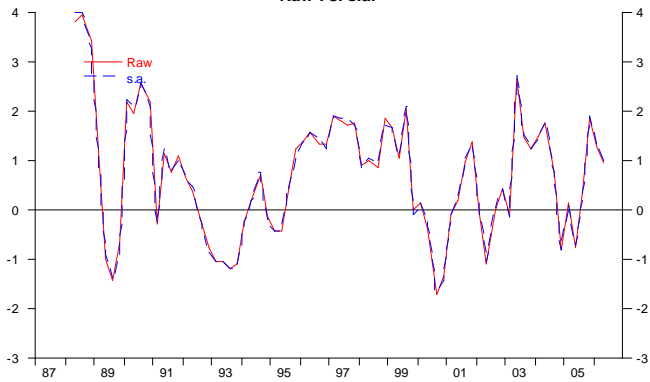


Rolling (40q) correlation with 90 day rate gap

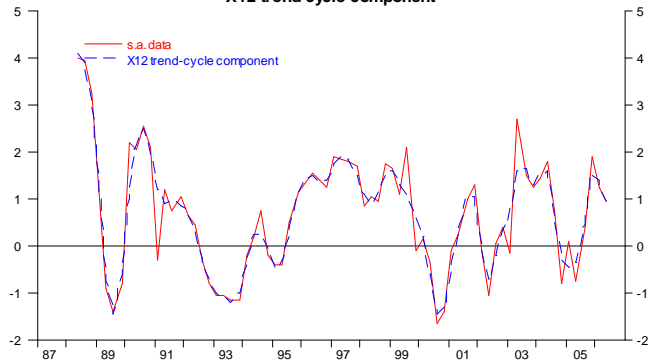


APC QES real wages

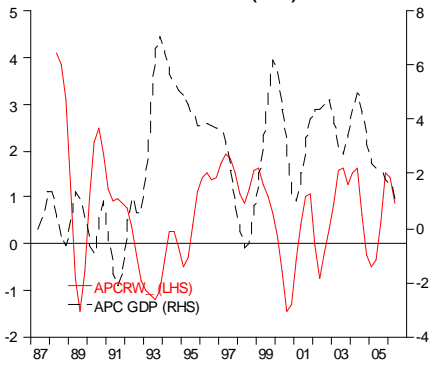
Raw vs. s.a.



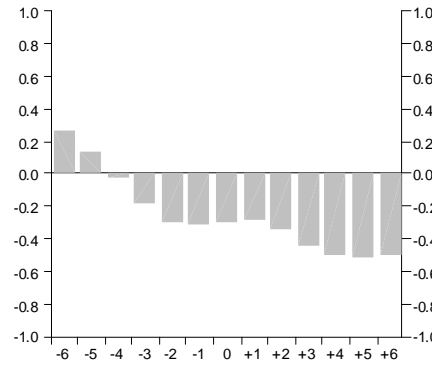
s.a. data vs. X12 trend-cycle component



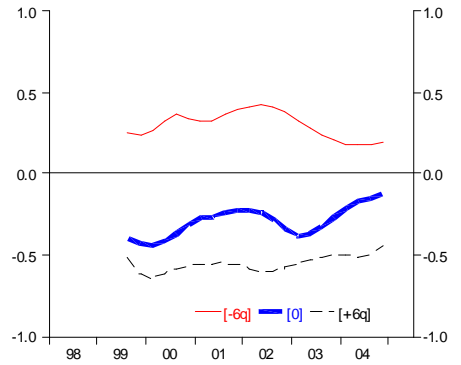
APC (LHS) vs. APC GDP (RHS)



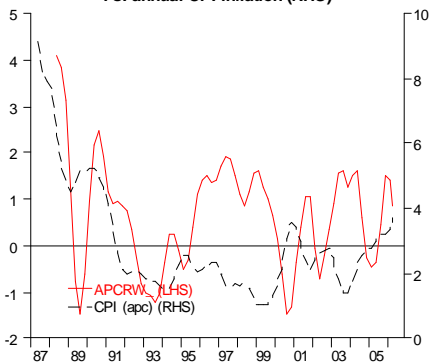
Correlation with APC GDP



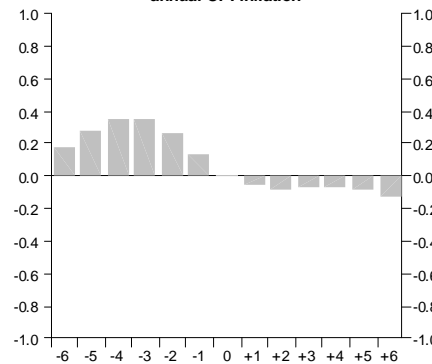
Rolling (40q) correlation with APC GDP



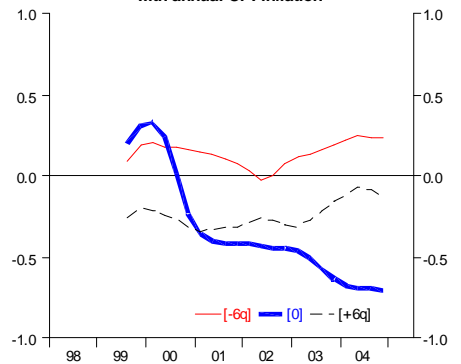
APC (LHS) vs. annual CPI inflation (RHS)



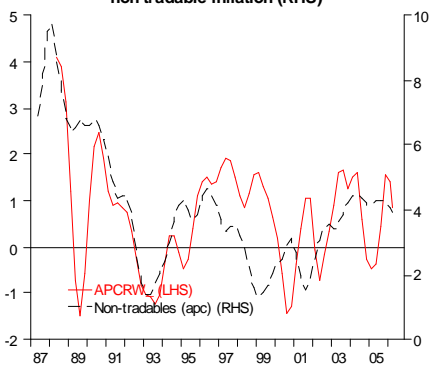
Correlation with annual CPI inflation



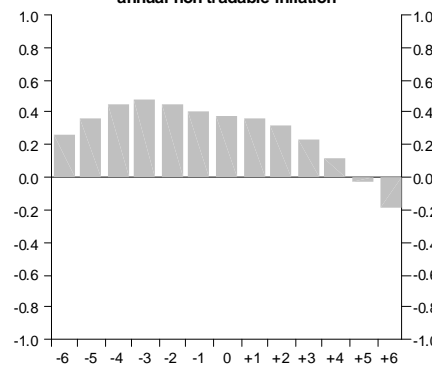
Rolling (40q) correlation with annual CPI inflation



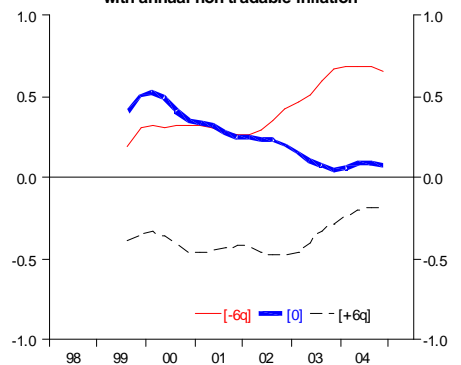
APC (LHS) vs. annual non-tradable inflation (RHS)



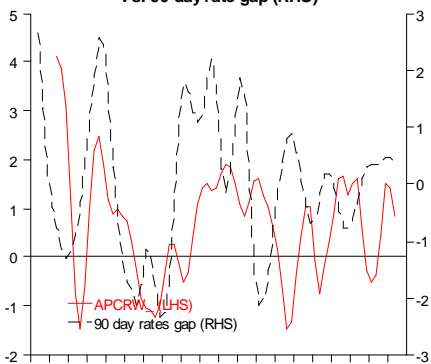
Correlation with annual non-tradable inflation



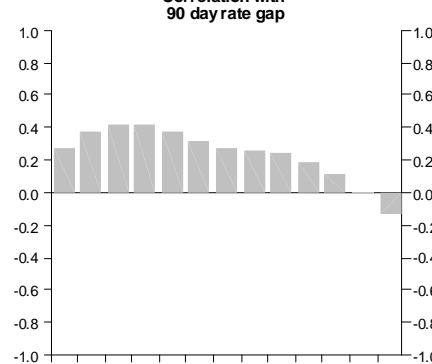
Rolling (40q) correlation with annual non-tradable inflation



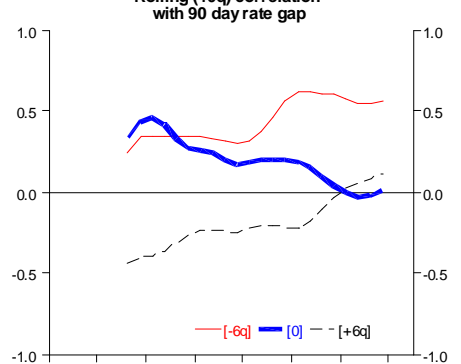
vs. 90 day rate gap (RHS)



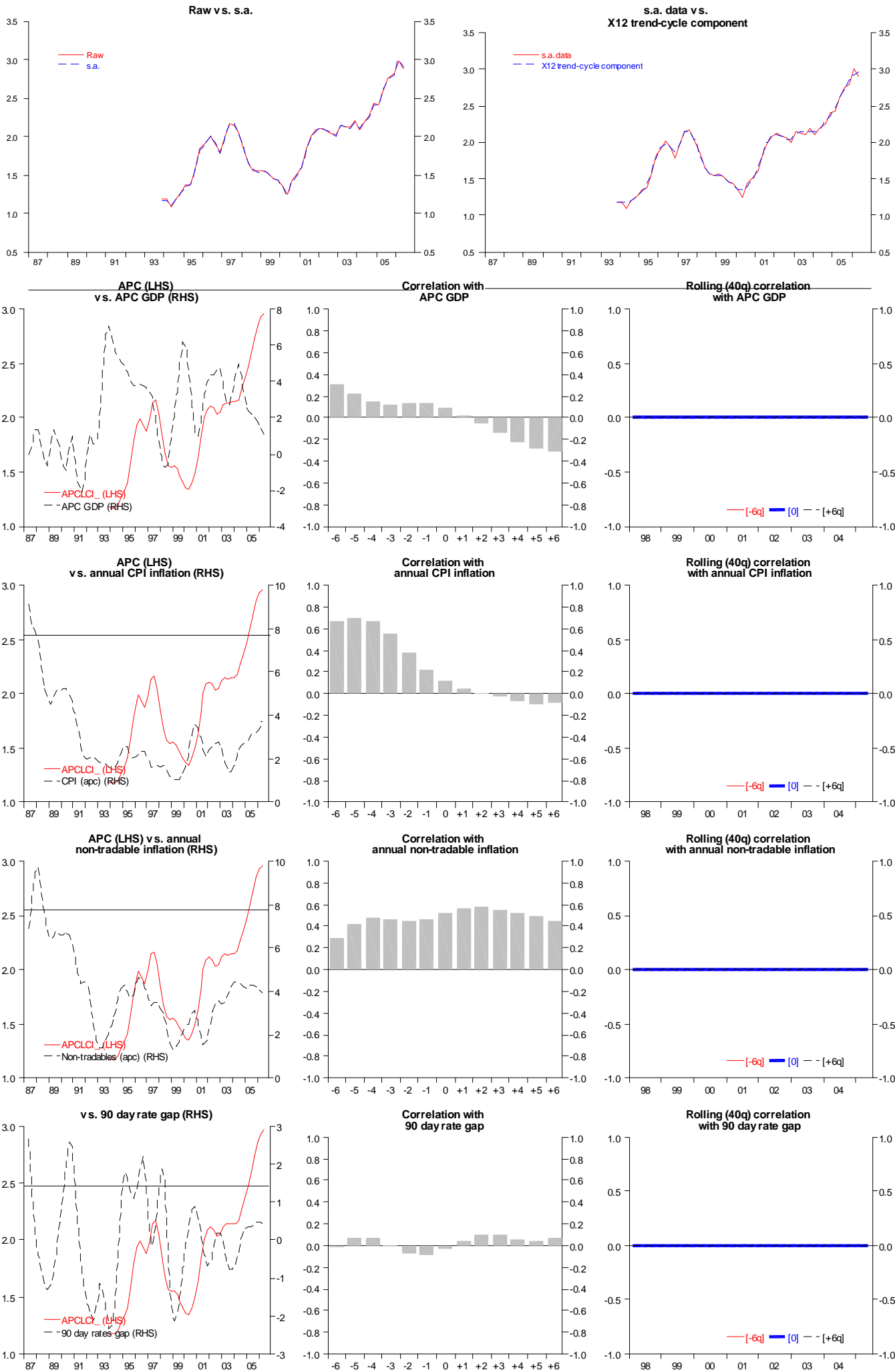
Correlation with 90 day rate gap



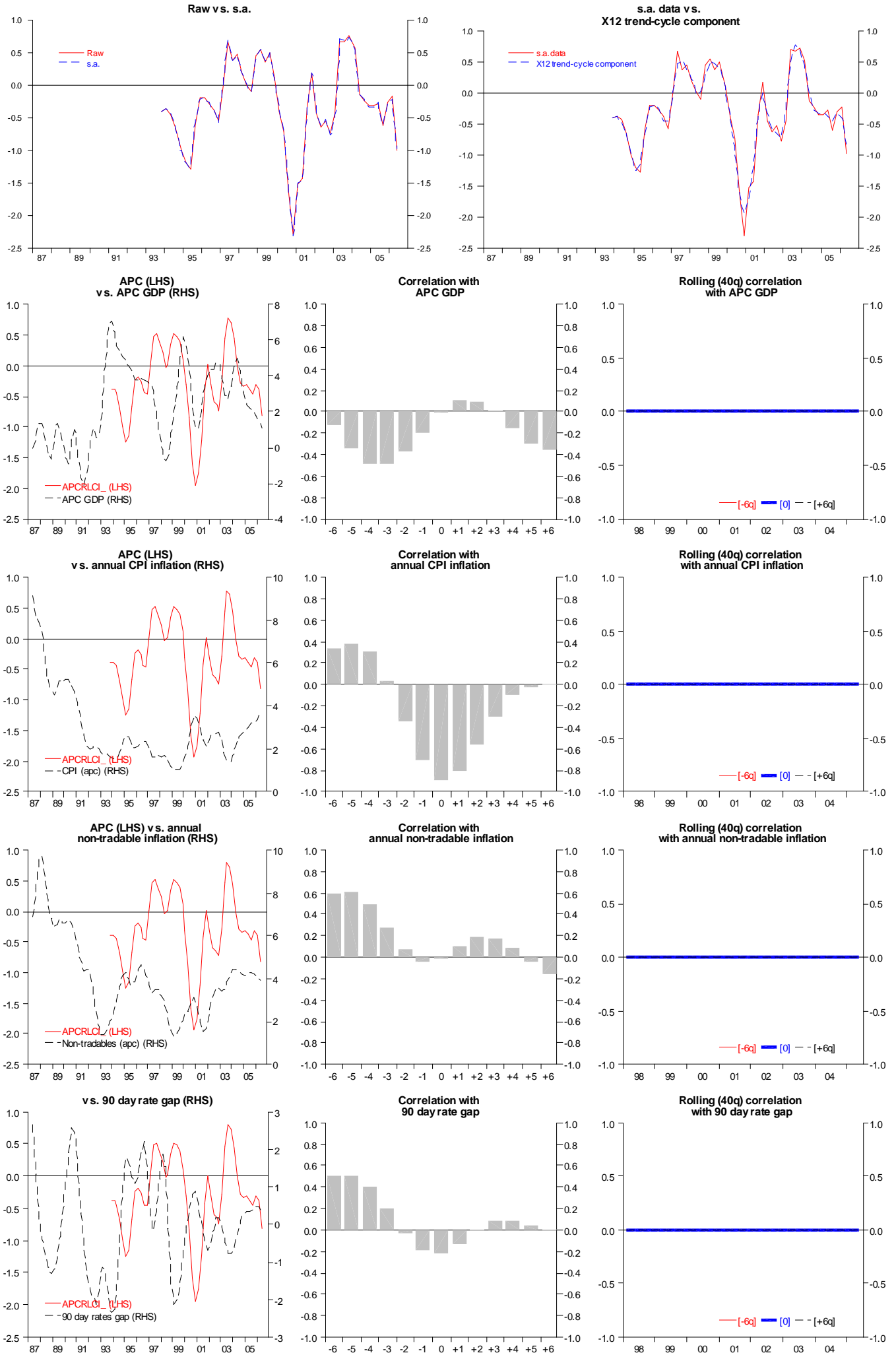
Rolling (40q) correlation with 90 day rate gap



APC labour cost index (llisai)



APC real labour cost index



Annual change, net migration, working age (000)

