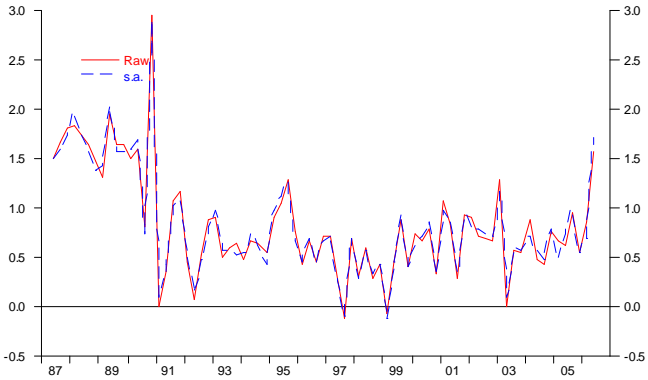
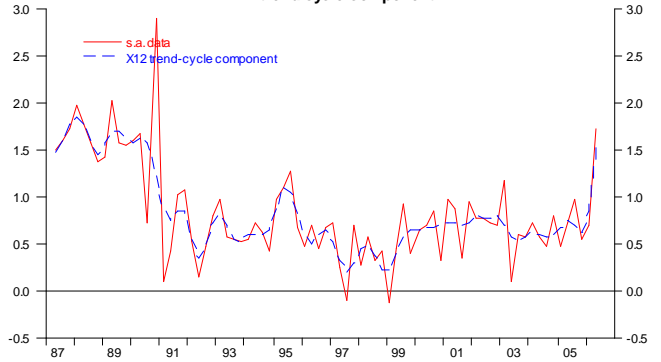


QPC Australia CPI index

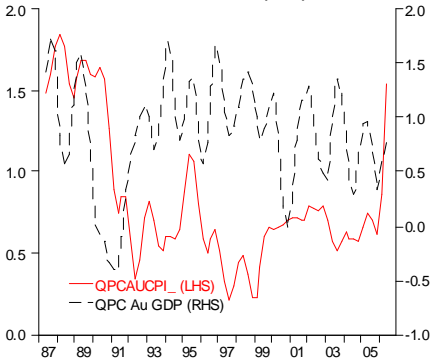
Raw vs. s.a.



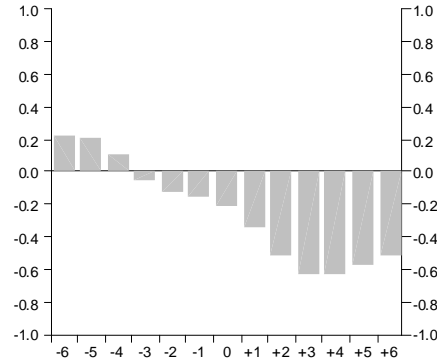
s.a. data vs. X12 trend-cycle component



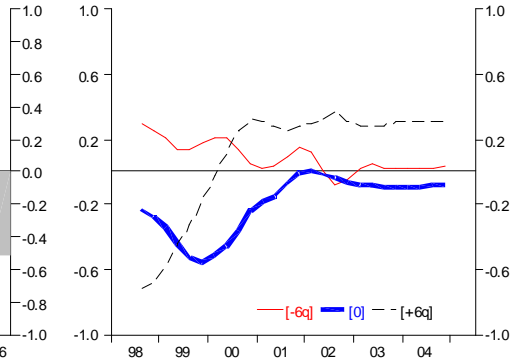
QPC (LHS) vs. QPC Au GDP (RHS)



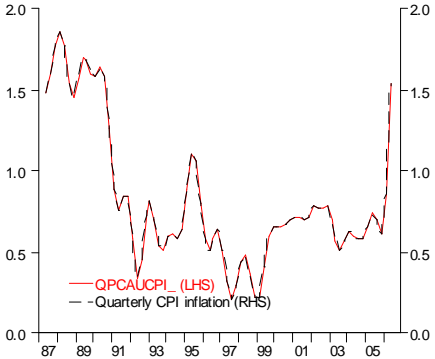
Correlation with QPC Au GDP



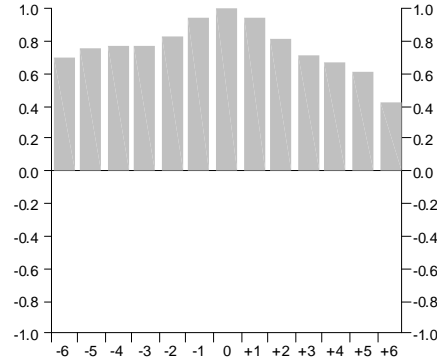
Rolling (40q) correlation with QPC Au GDP



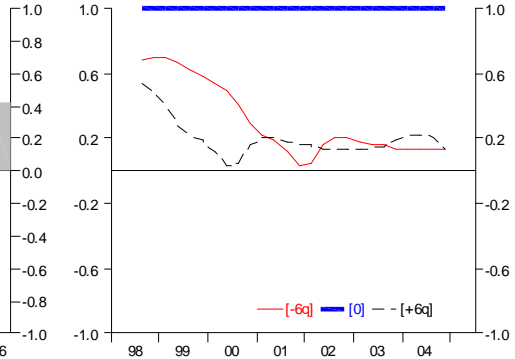
QPC (LHS) vs. Au quarterly CPI inflation (RHS)



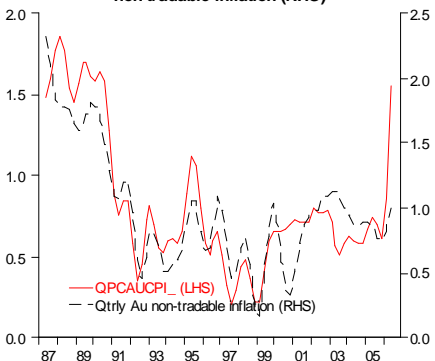
Correlation with Au quarterly CPI inflation



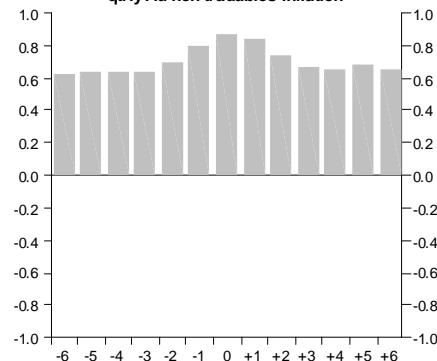
Rolling (40q) correlation with Au quarterly CPI inflation



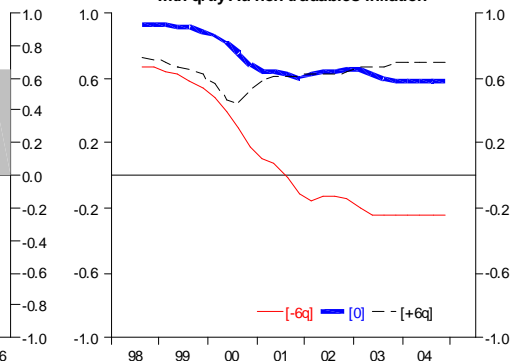
QPC (LHS) vs. qtrly Au non-tradable inflation (RHS)



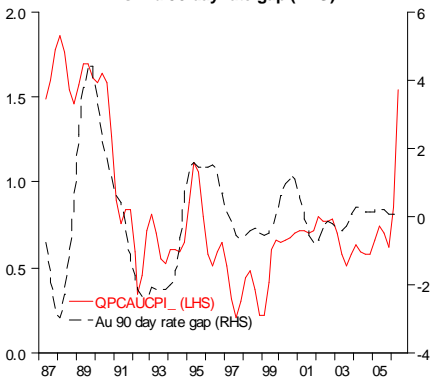
Correlation with qtrly Au non-tradables inflation



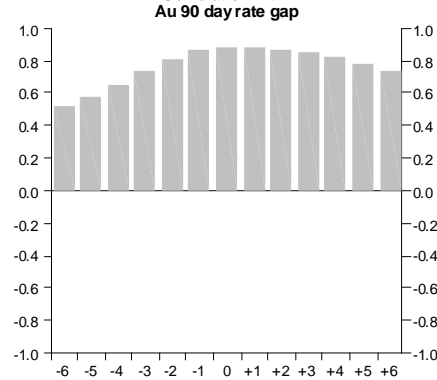
Rolling (40q) correlation with qtrly Au non-tradables inflation



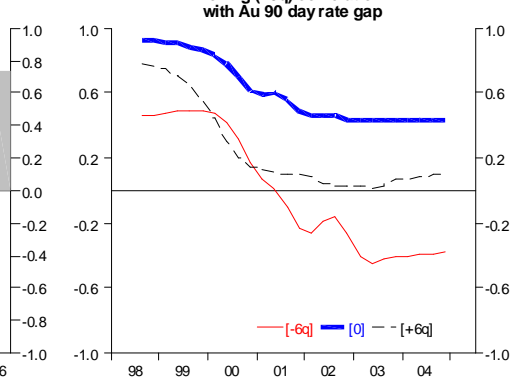
vs. Au 90 day rate gap (RHS)



Correlation with Au 90 day rate gap

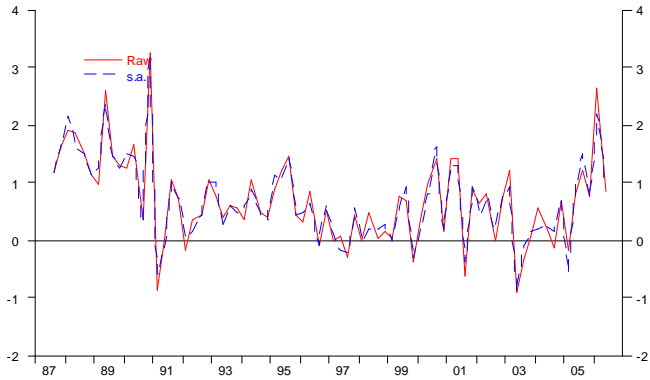


Rolling (40q) correlation with Au 90 day rate gap

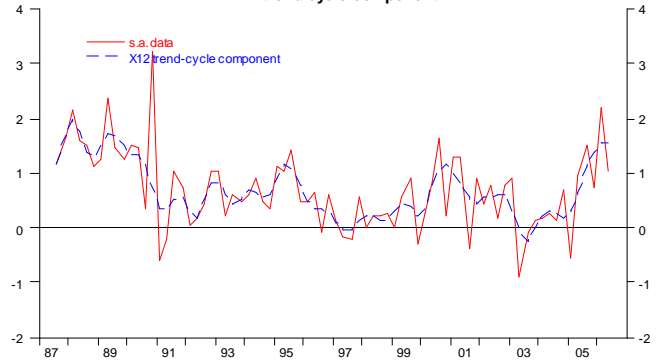


QPC Australia tradables inflation

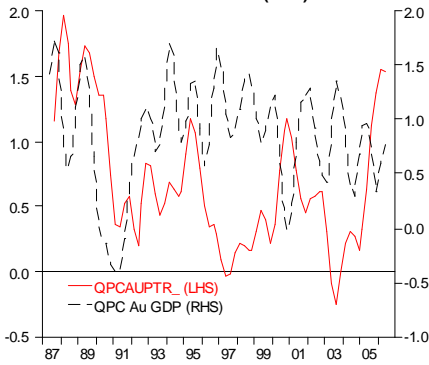
Raw vs. s.a.



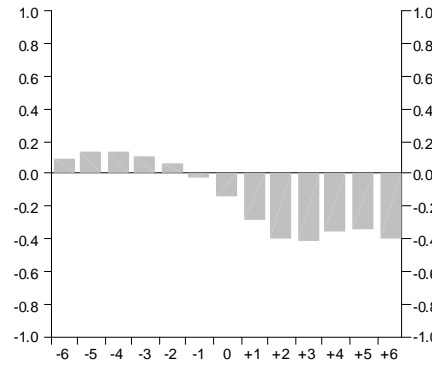
s.a. data vs. X12 trend-cycle component



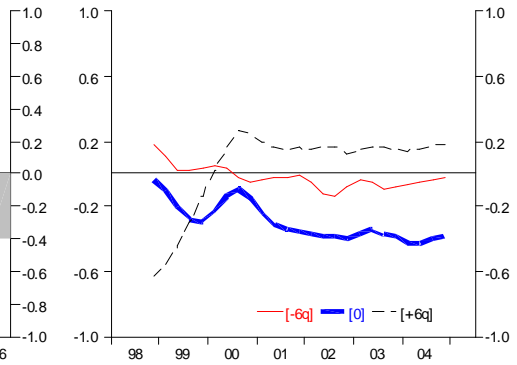
QPC (LHS) vs. QPC Au GDP (RHS)



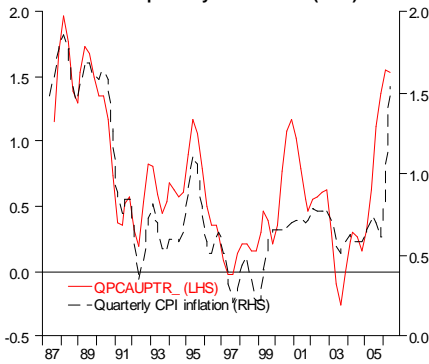
Correlation with QPC Au GDP



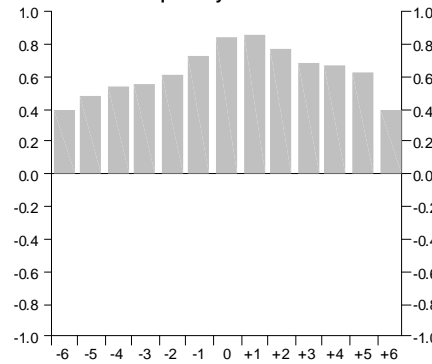
Rolling (40q) correlation with QPC Au GDP



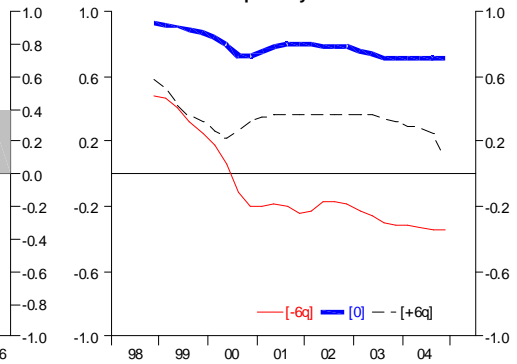
QPC (LHS) vs. Au quarterly CPI inflation (RHS)



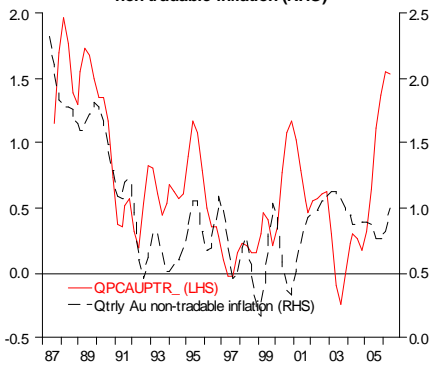
Correlation with Au quarterly CPI inflation



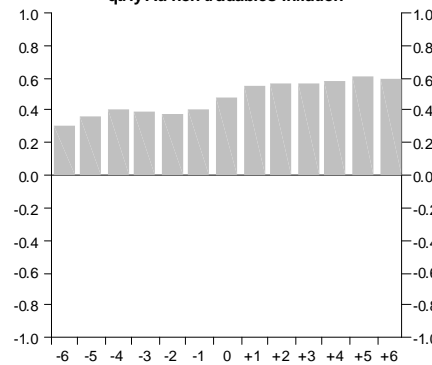
Rolling (40q) correlation with Au quarterly CPI inflation



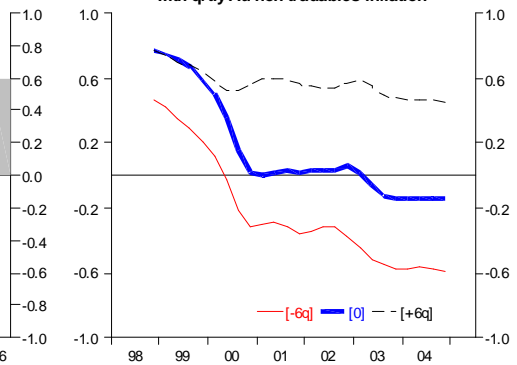
QPC (LHS) vs. qtrly Au non-tradable inflation (RHS)



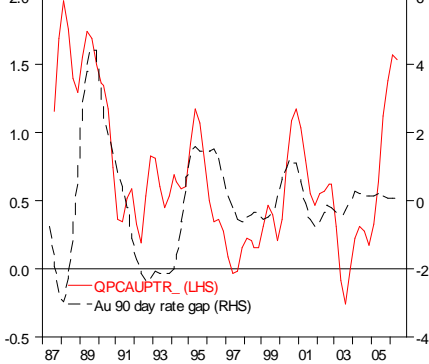
Correlation with qtrly Au non-tradables inflation



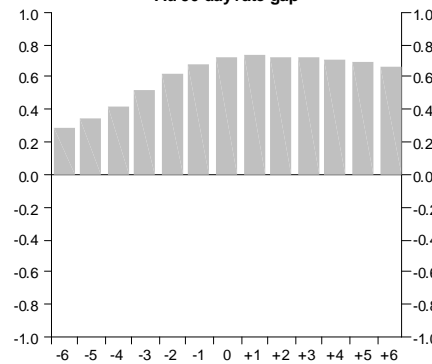
Rolling (40q) correlation with qtrly Au non-tradables inflation



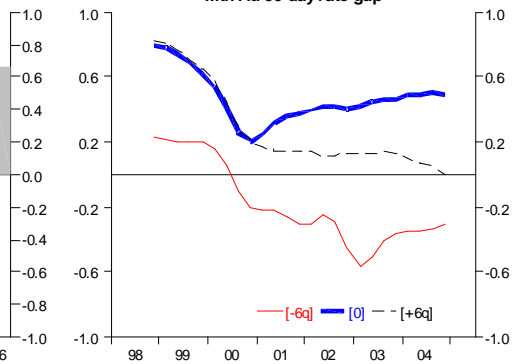
vs. Au 90 day rate gap (RHS)



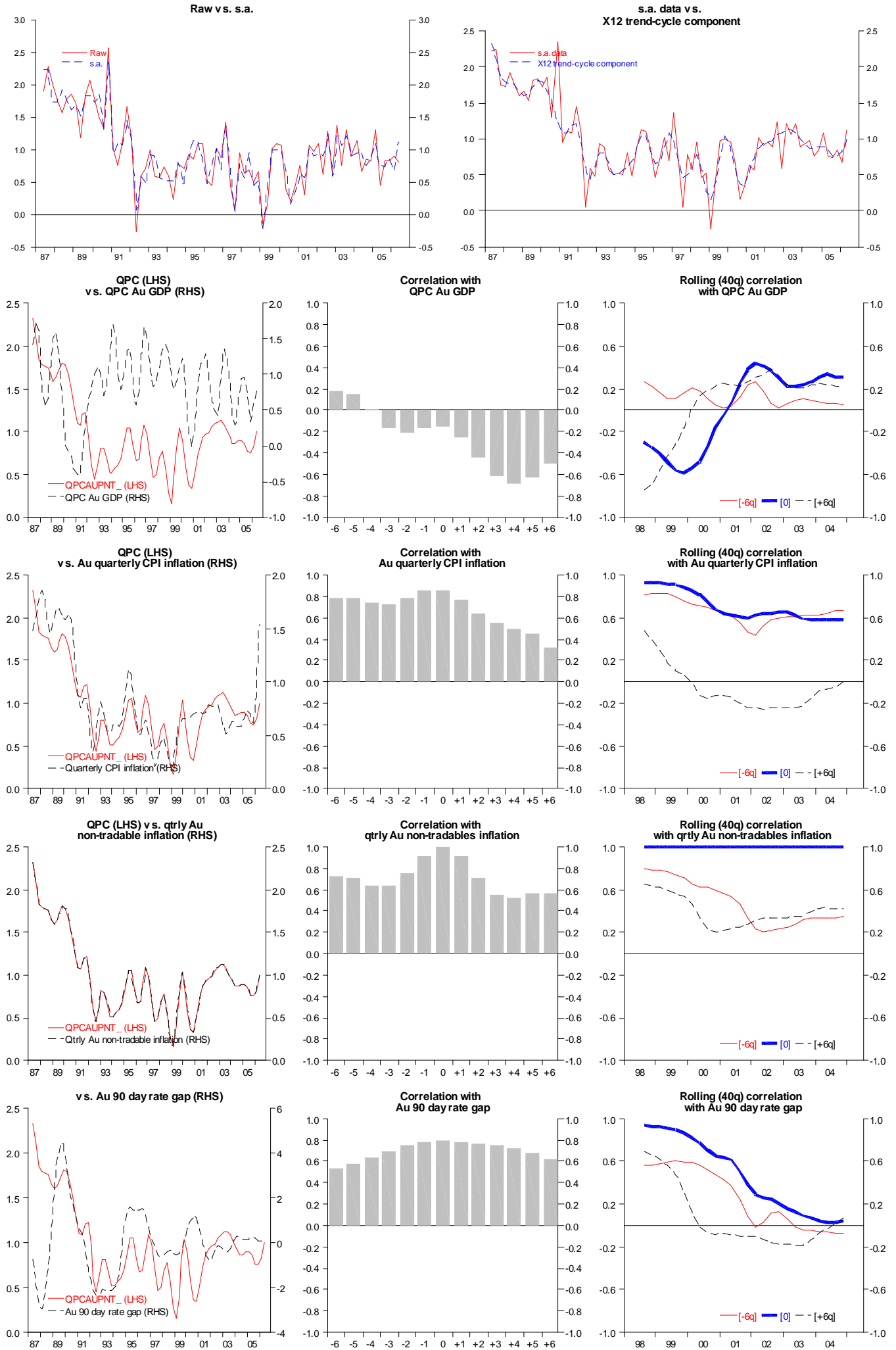
Correlation with Au 90 day rate gap



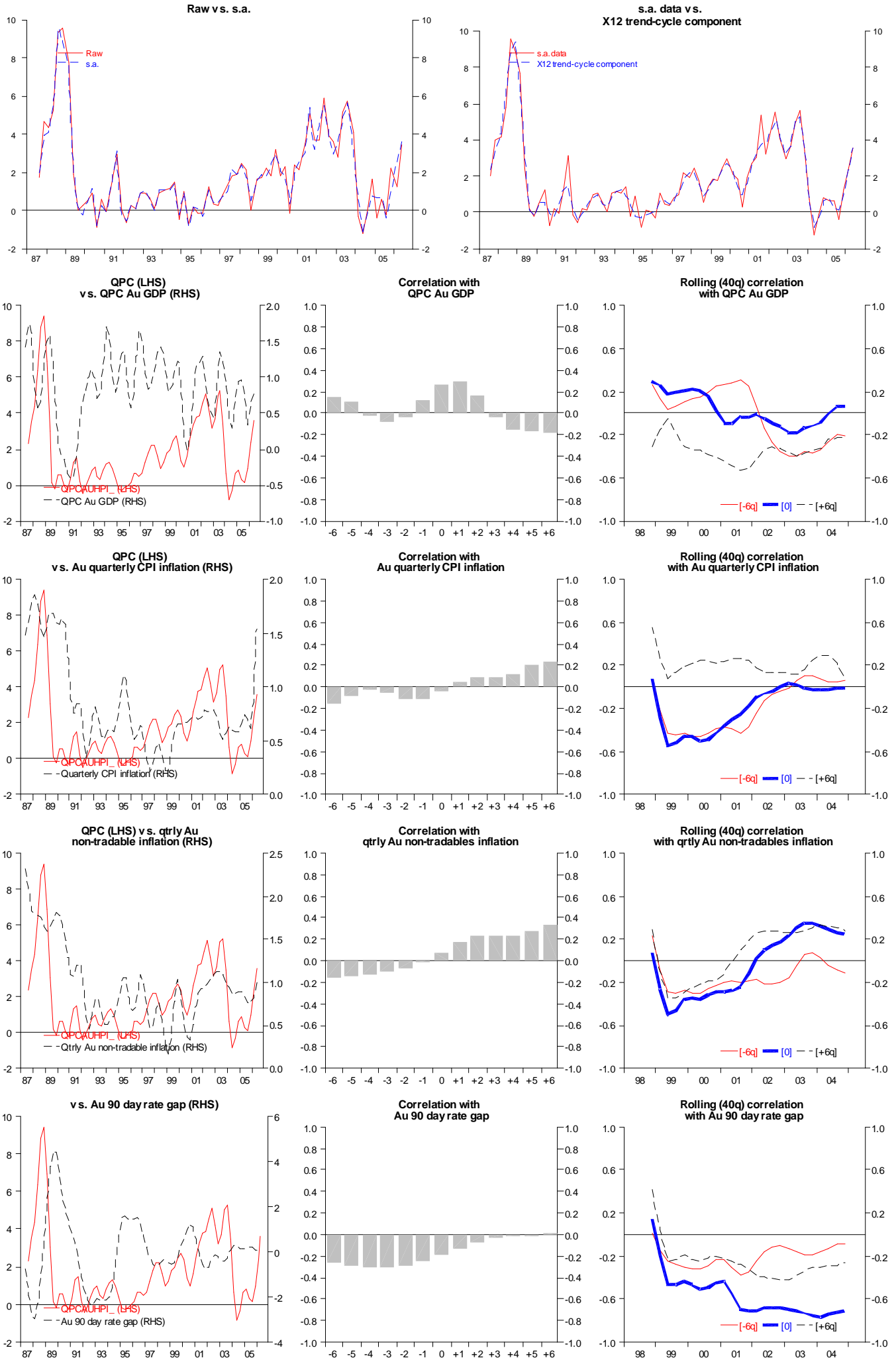
Rolling (40q) correlation with Au 90 day rate gap



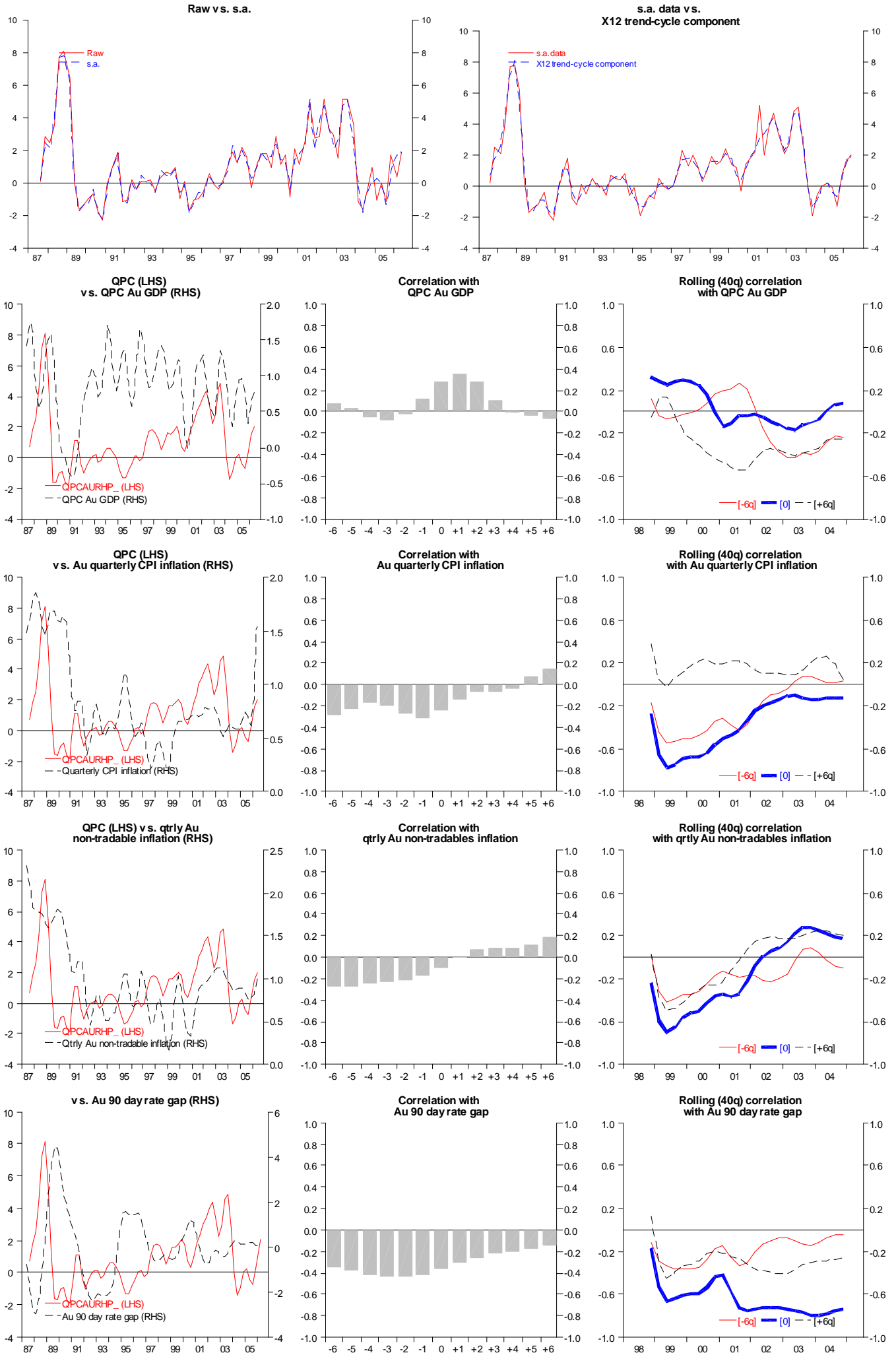
QPC Australia non-tradables inflation



QPC Australia house price index

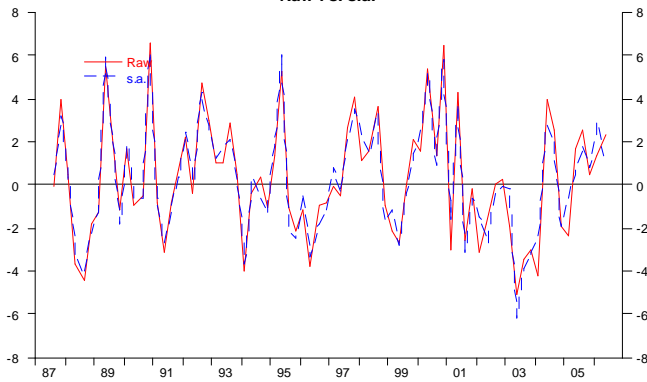


QPC Australia real house price index

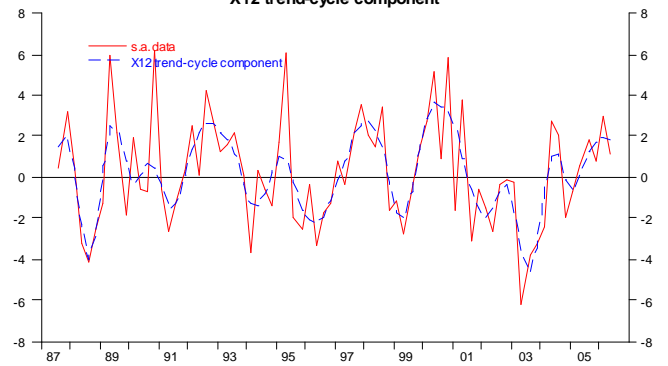


QPC Australia import prices

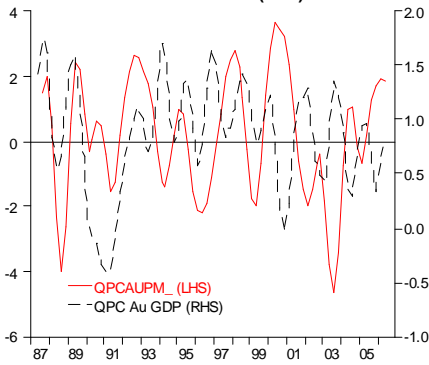
Raw vs. s.a.



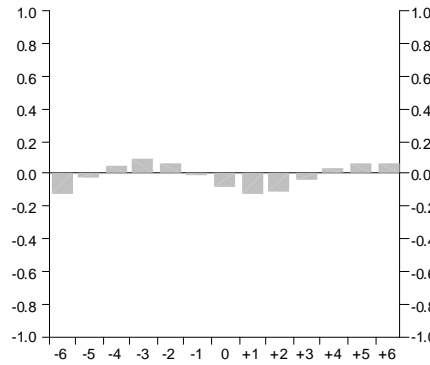
s.a. data vs. X12 trend-cycle component



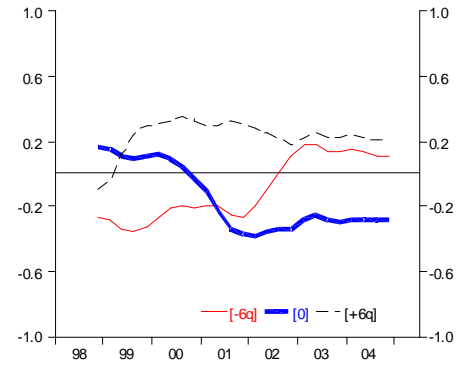
QPC (LHS) vs. QPC Au GDP (RHS)



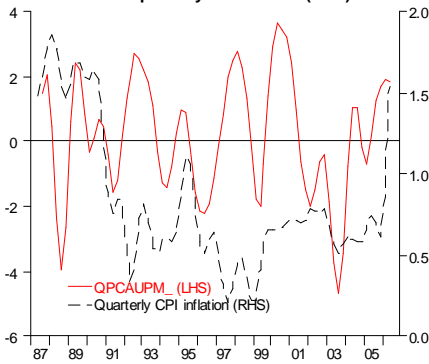
Correlation with QPC Au GDP



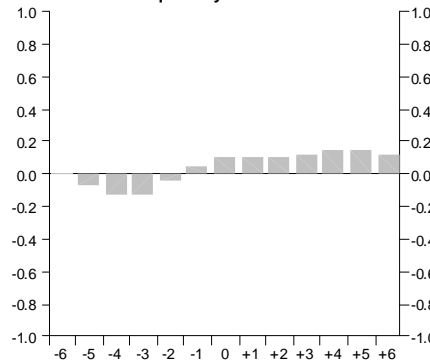
Rolling (40q) correlation with QPC Au GDP



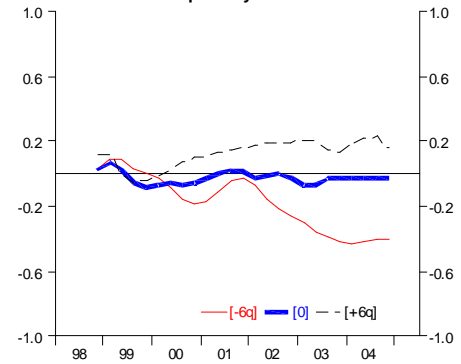
QPC (LHS) vs. Au quarterly CPI inflation (RHS)



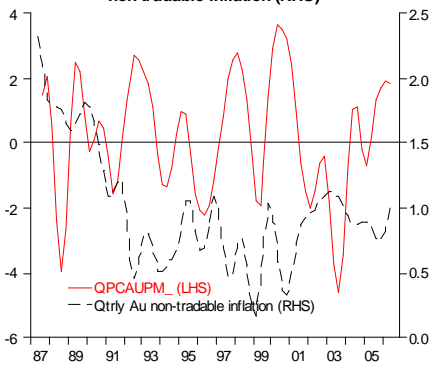
Correlation with Au quarterly CPI inflation



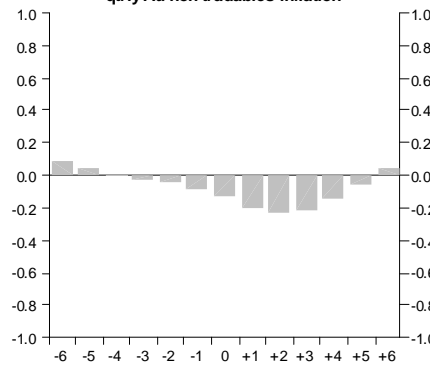
Rolling (40q) correlation with Au quarterly CPI inflation



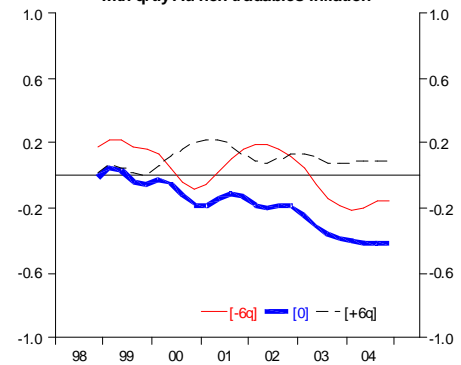
QPC (LHS) vs. qtrly Au non-tradable inflation (RHS)



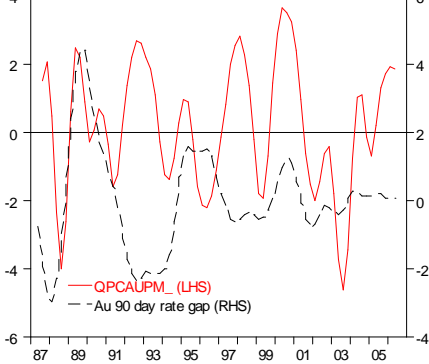
Correlation with qtrly Au non-tradables inflation



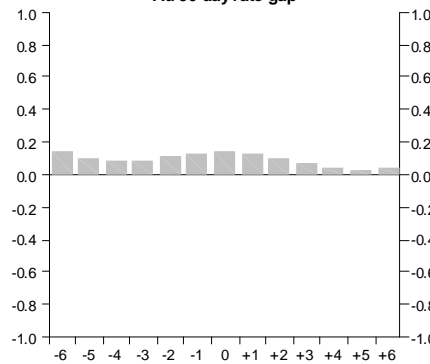
Rolling (40q) correlation with qtrly Au non-tradables inflation



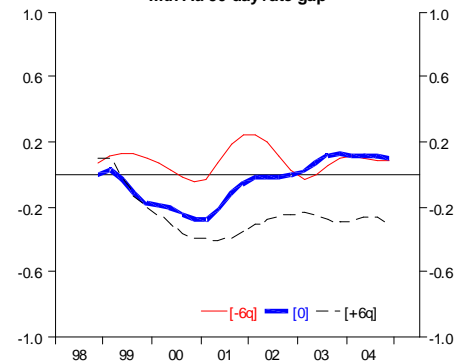
vs. Au 90 day rate gap (RHS)



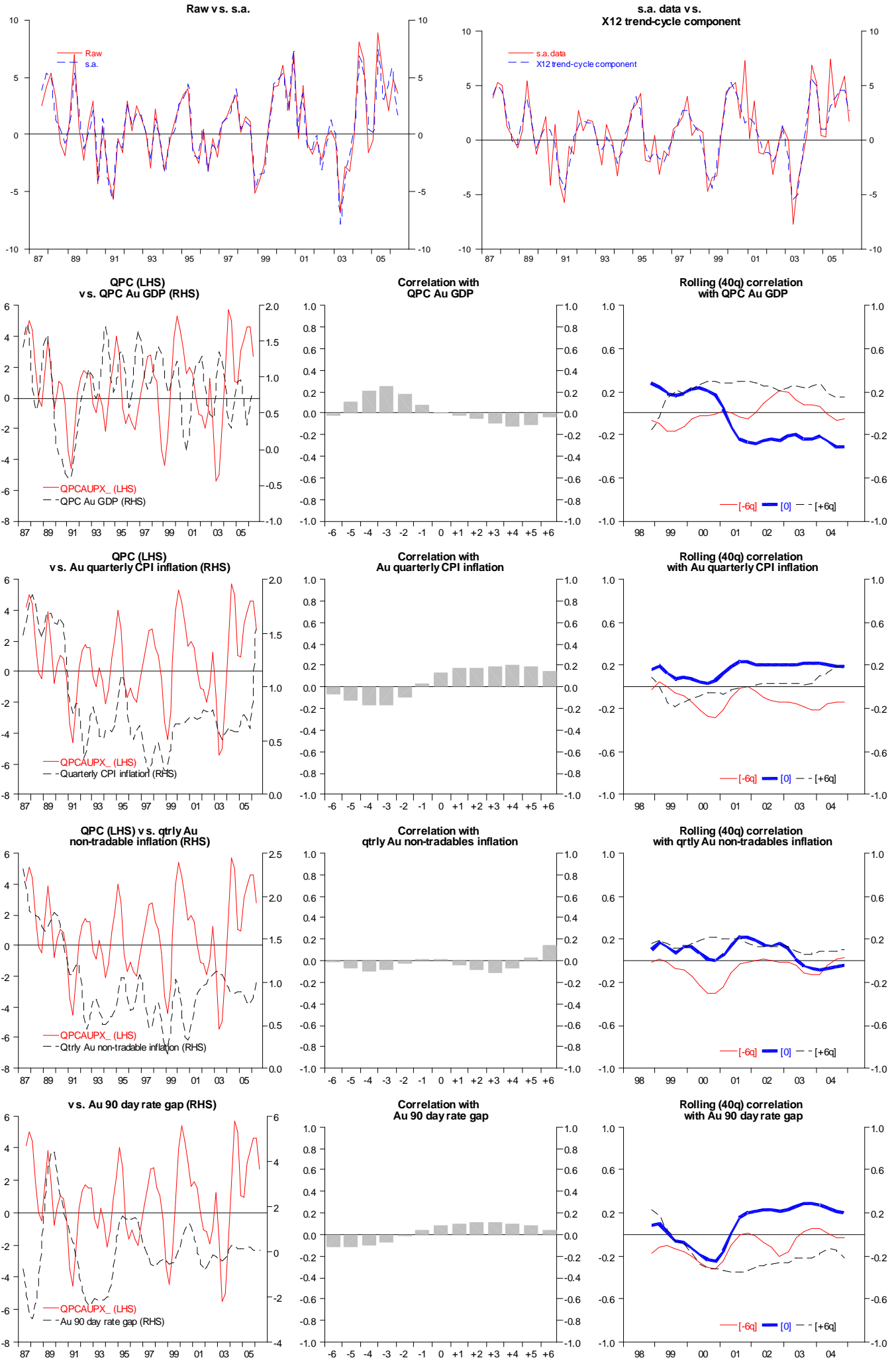
Correlation with Au 90 day rate gap



Rolling (40q) correlation with Au 90 day rate gap



QPC Australia export prices



QPC commodity prices for Aust exports (SDRs)

