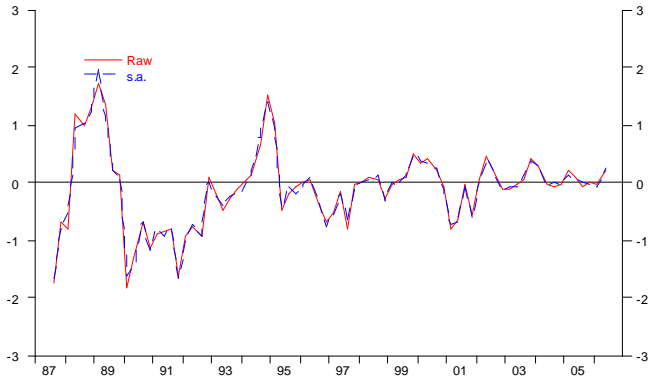
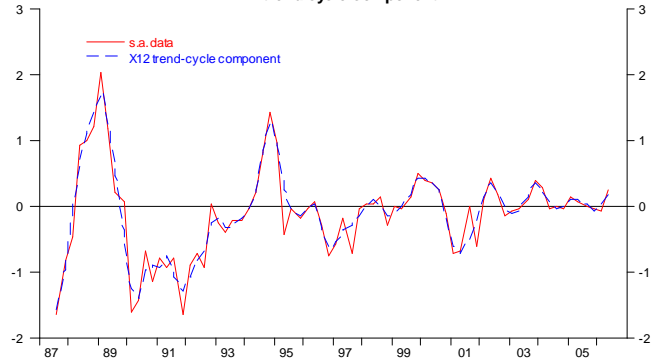


# Quarterly difference Australia 90 day rates

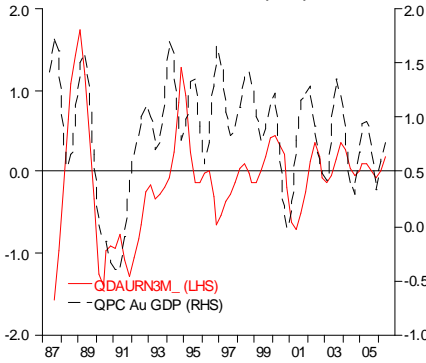
Raw vs. s.a.



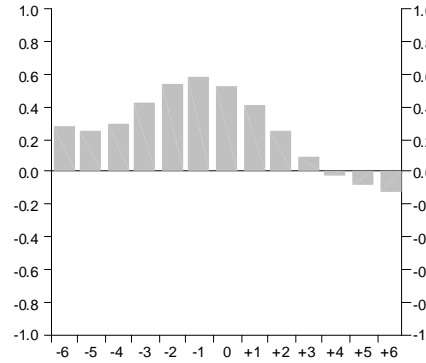
s.a. data vs. X12 trend-cycle component



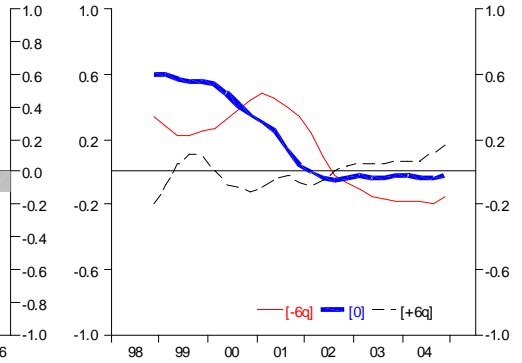
QPC (LHS) vs. QPC Au GDP (RHS)



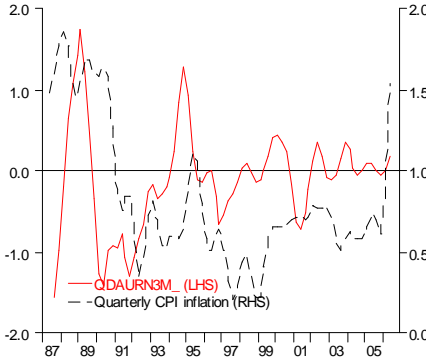
Correlation with QPC Au GDP



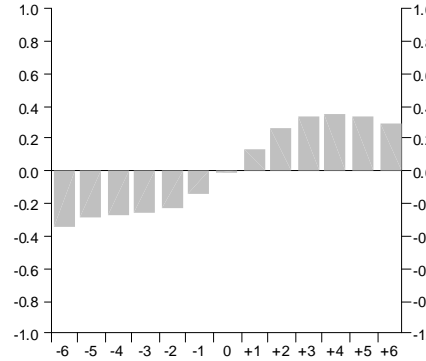
Rolling (40q) correlation with QPC Au GDP



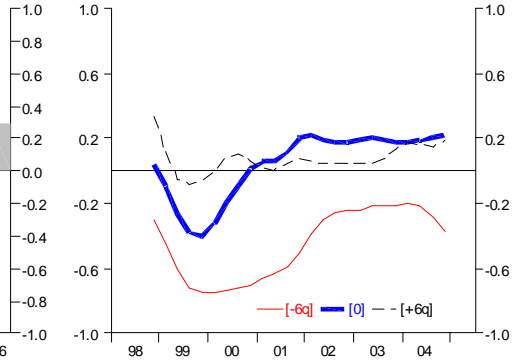
QPC (LHS) vs. Au quarterly CPI inflation (RHS)



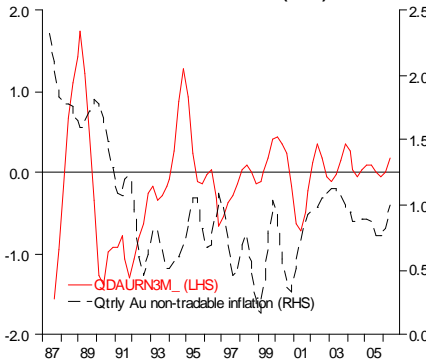
Correlation with Au quarterly CPI inflation



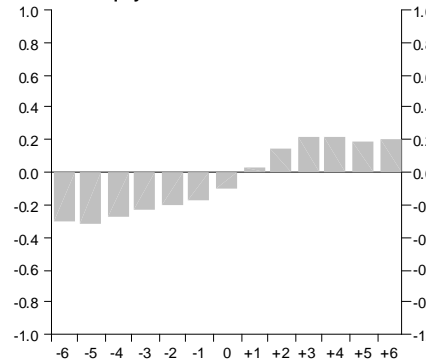
Rolling (40q) correlation with Au quarterly CPI inflation



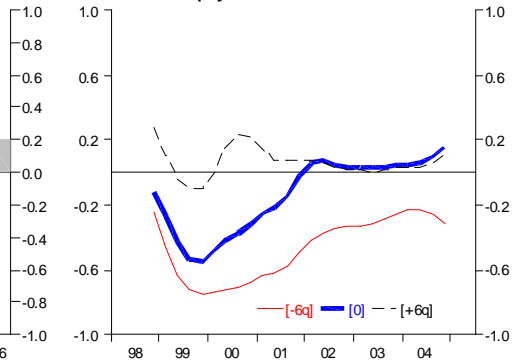
QPC (LHS) vs. qtrly Au non-tradable inflation (RHS)



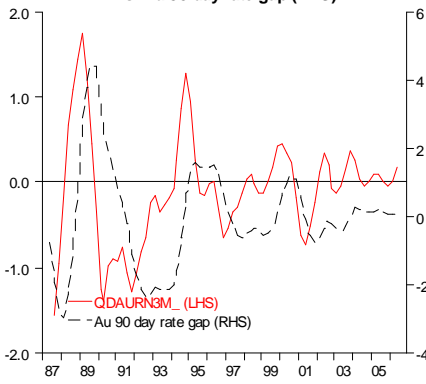
Correlation with qtrly Au non-tradables inflation



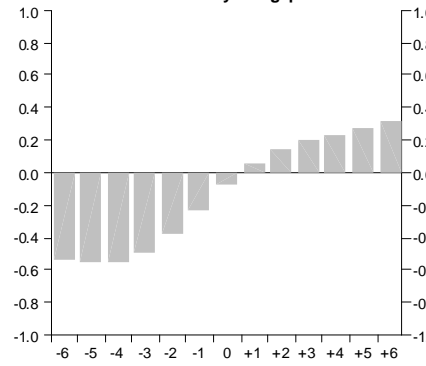
Rolling (40q) correlation with qtrly Au non-tradables inflation



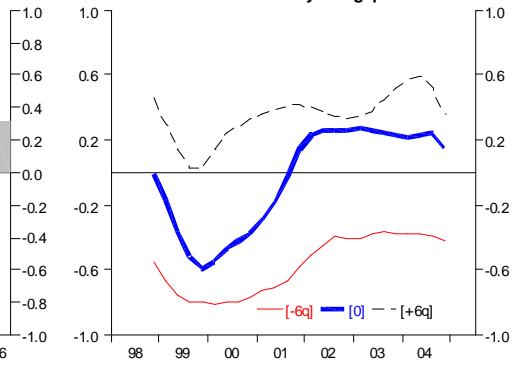
vs. Au 90 day rate gap (RHS)



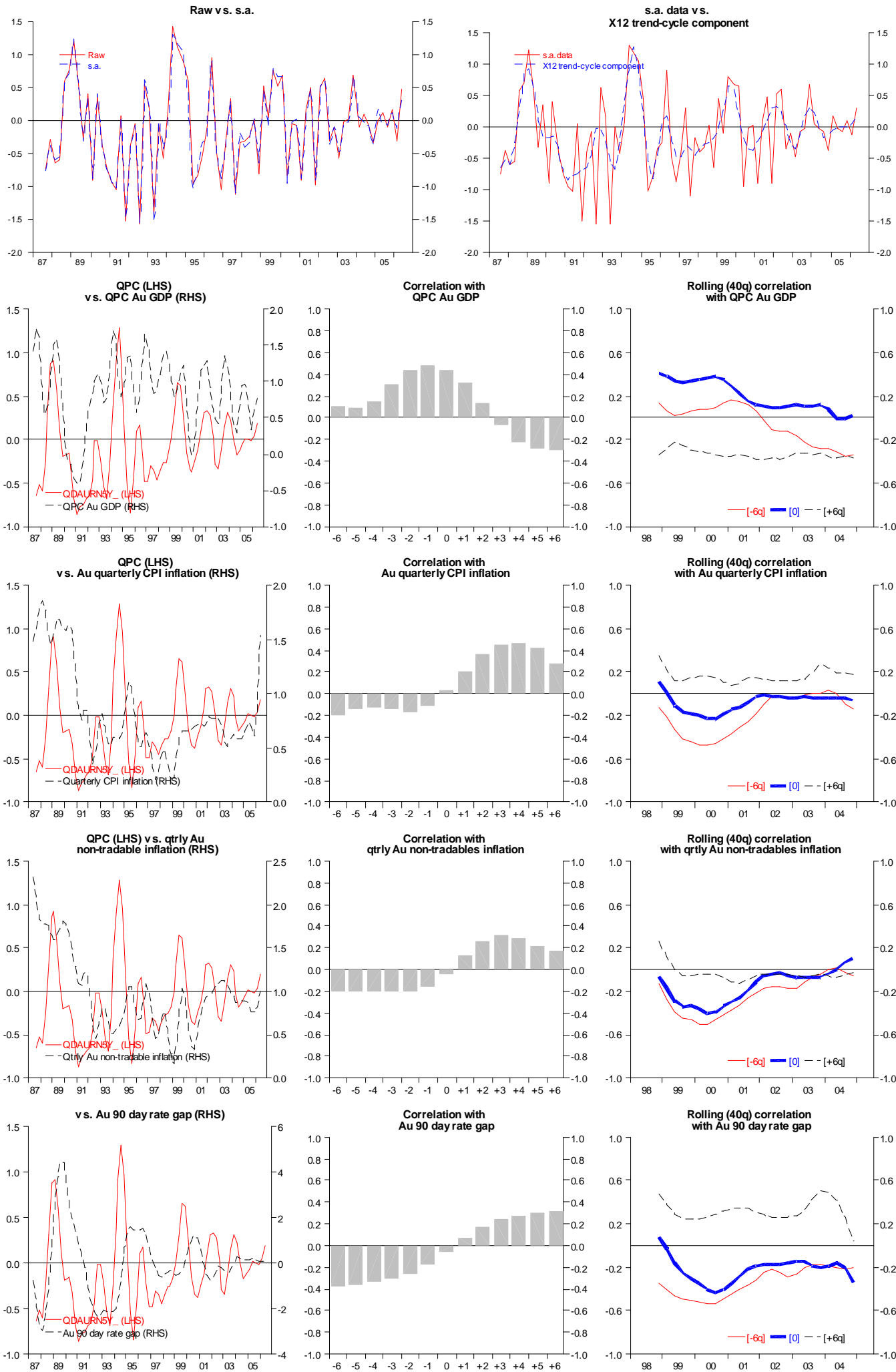
Correlation with Au 90 day rate gap



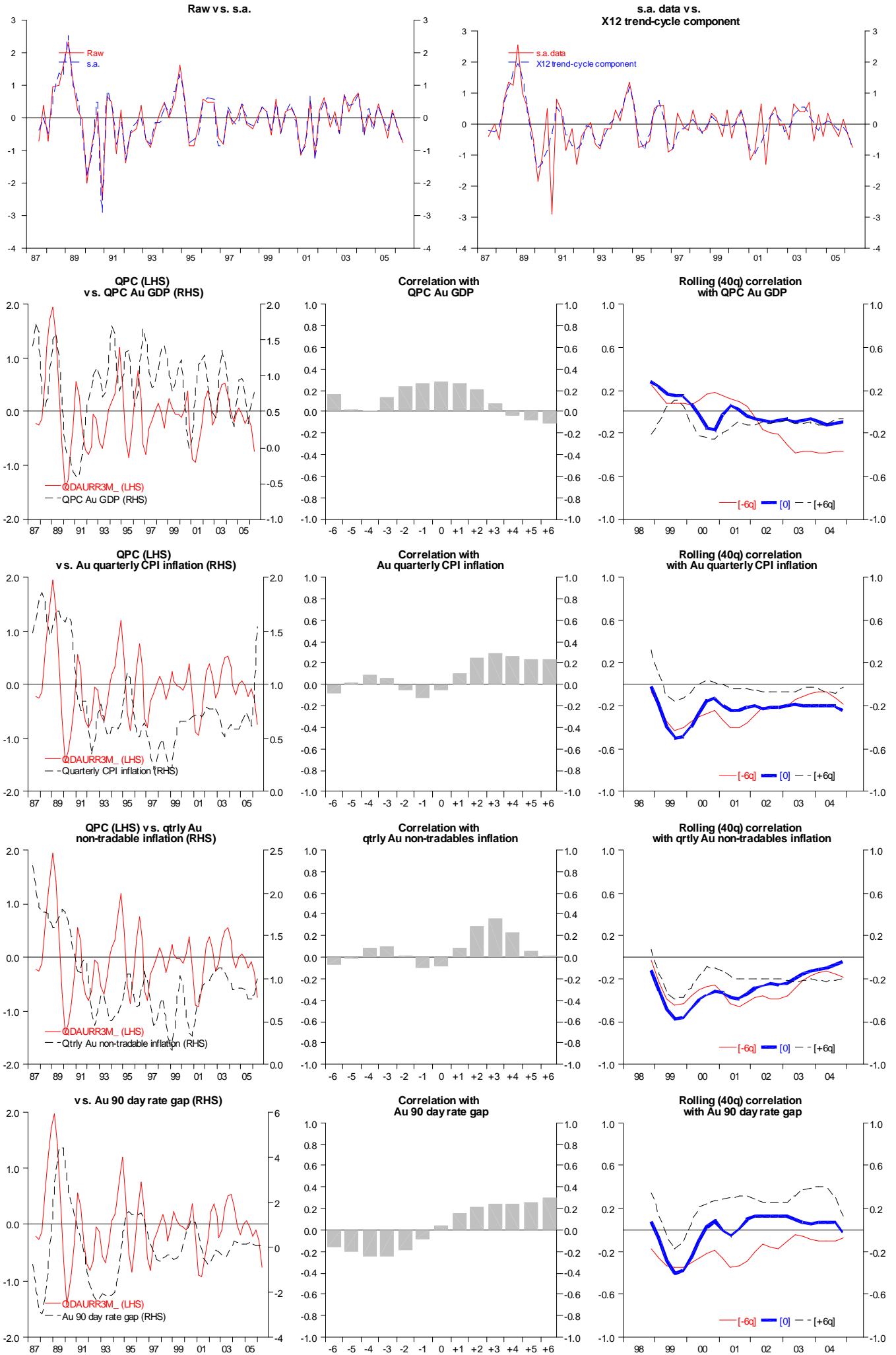
Rolling (40q) correlation with Au 90 day rate gap



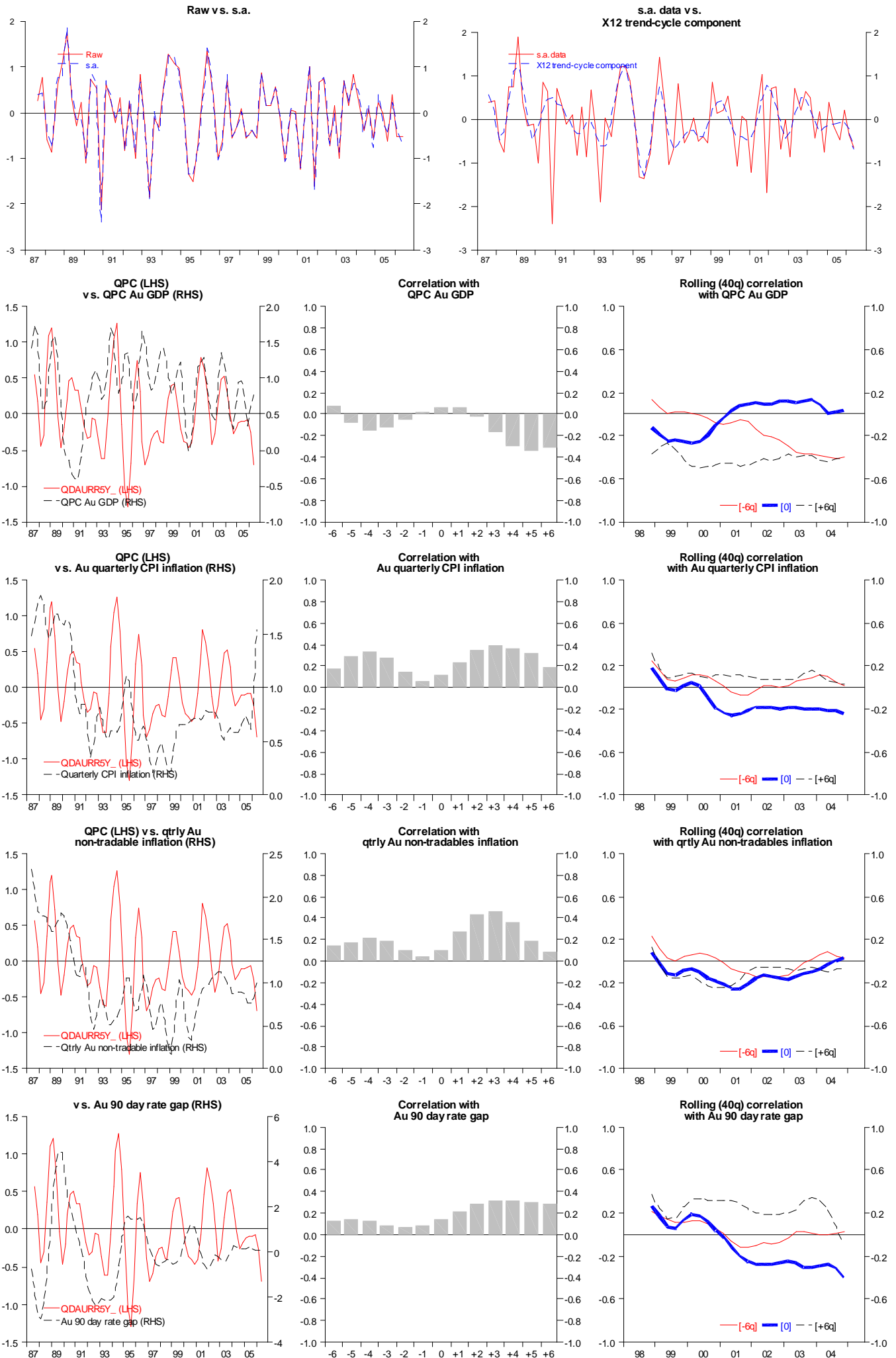
# Quarterly difference Australia 5 year rates



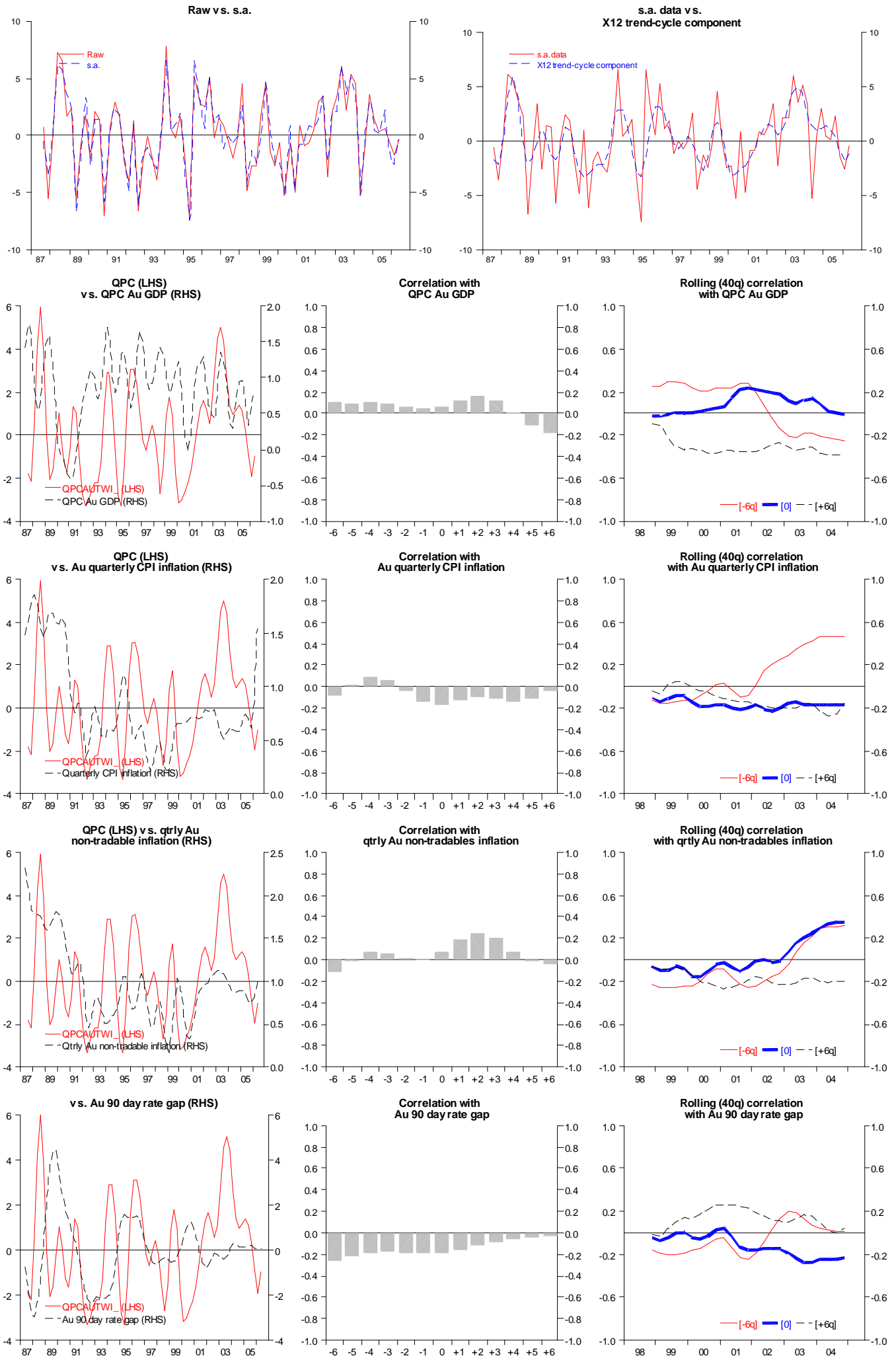
# Quarterly difference Australia real 90 day rates



# Quarterly difference Australia real 5 year rates



# QPC Australia nominal trade-weighted index



# QPC Australia IMF real exchange rate

