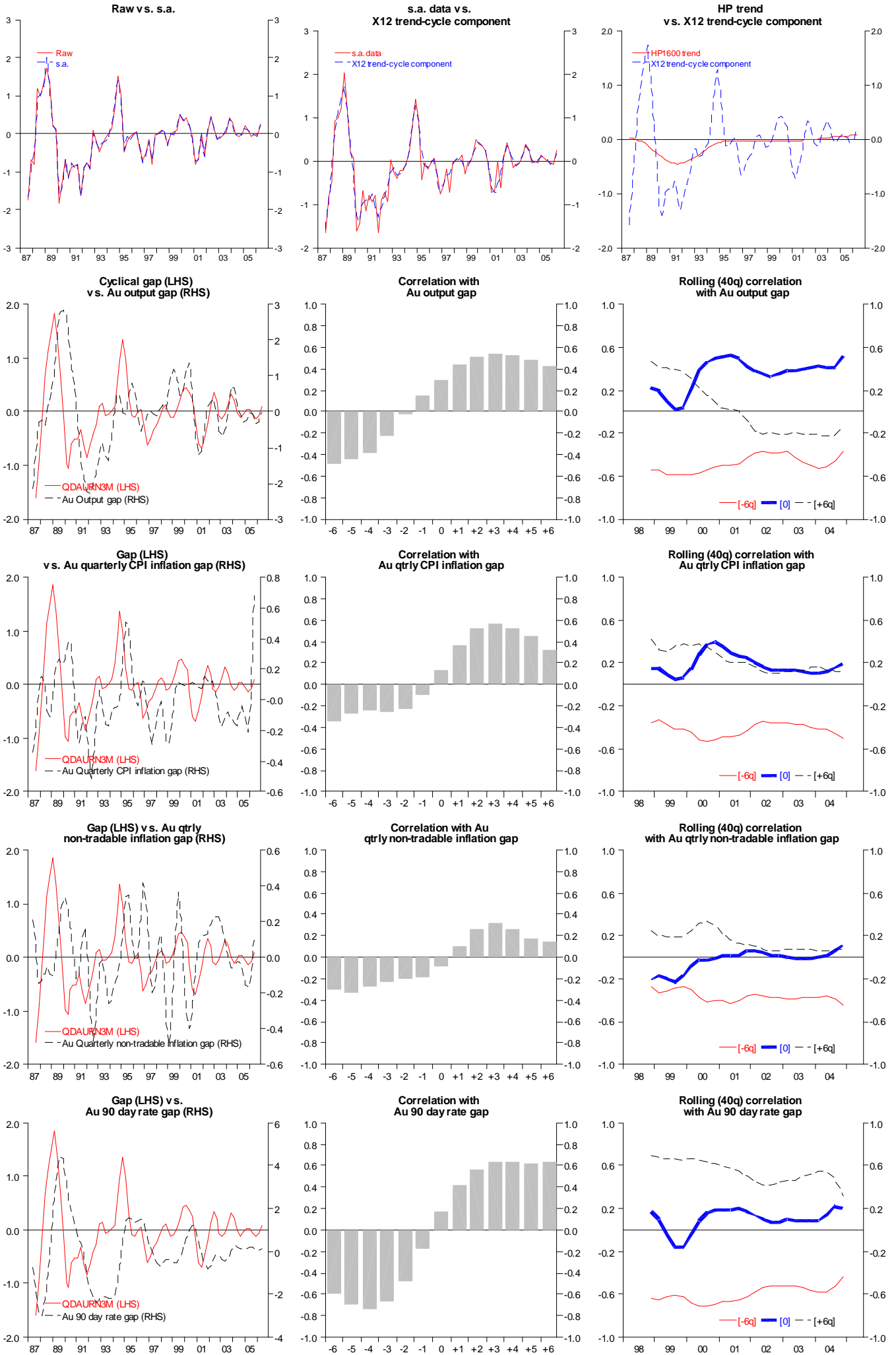
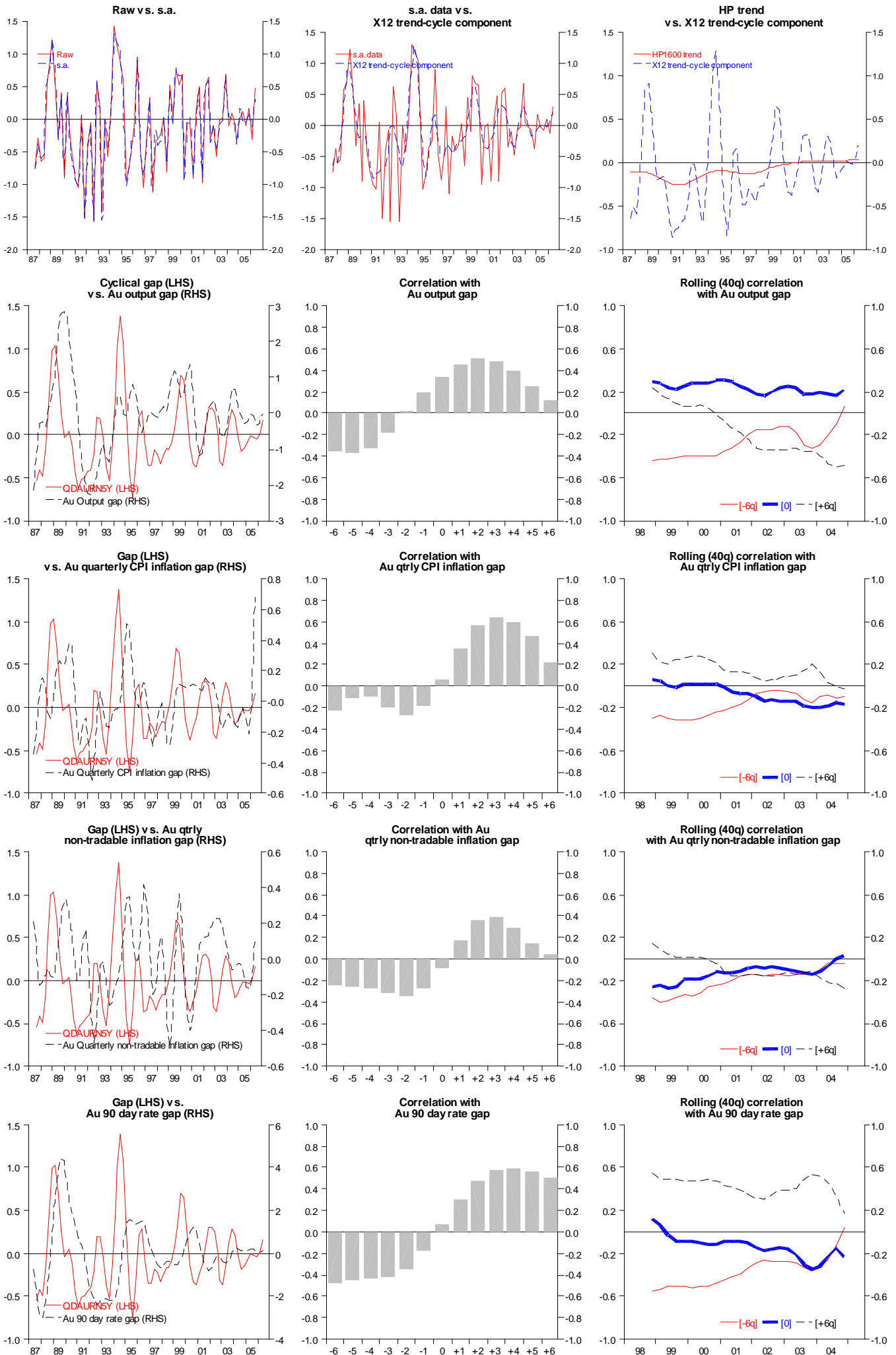


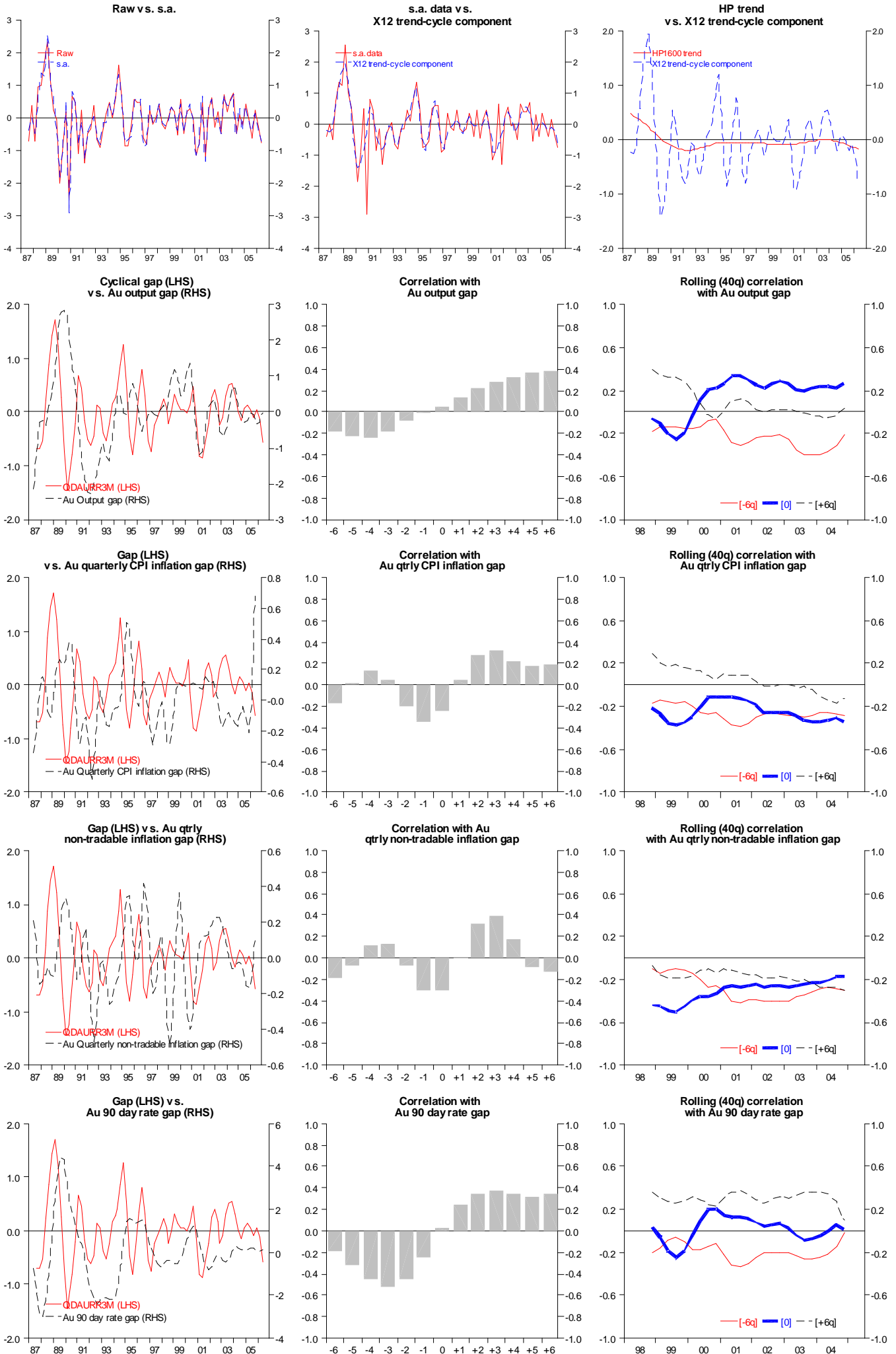
Quarterly difference Australia 90 day rates (HP filtered)



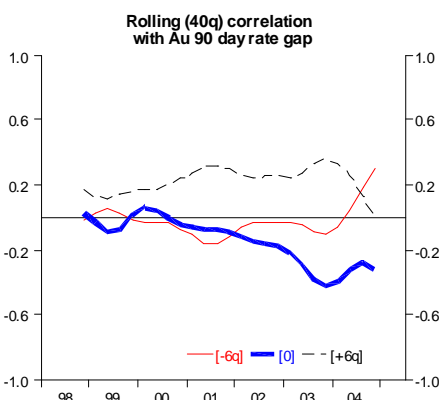
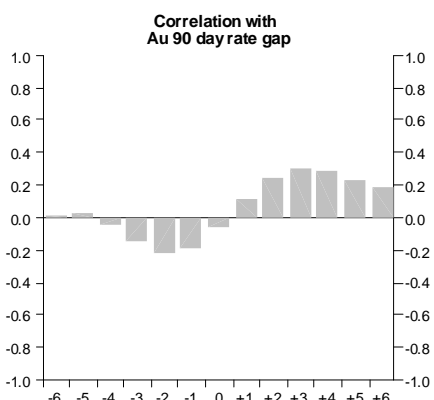
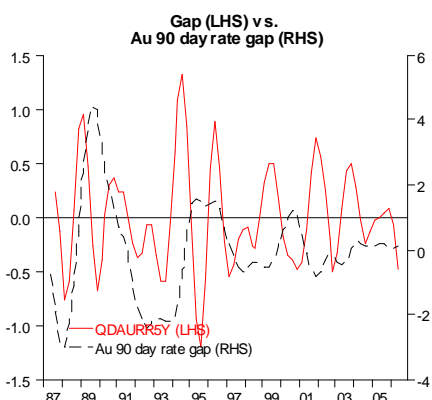
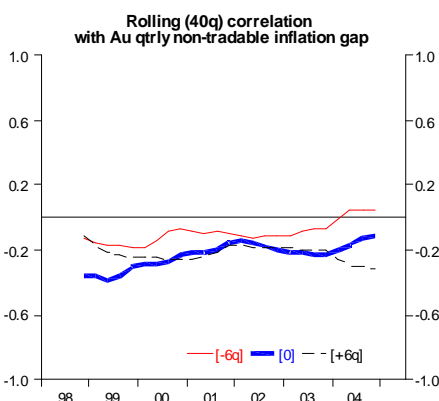
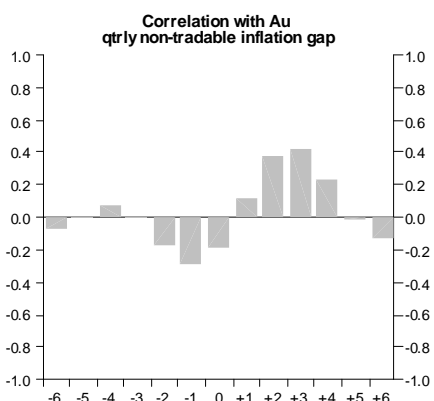
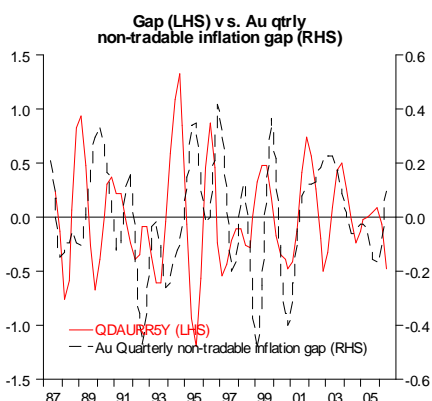
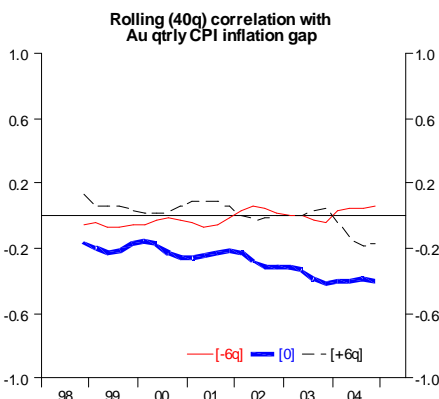
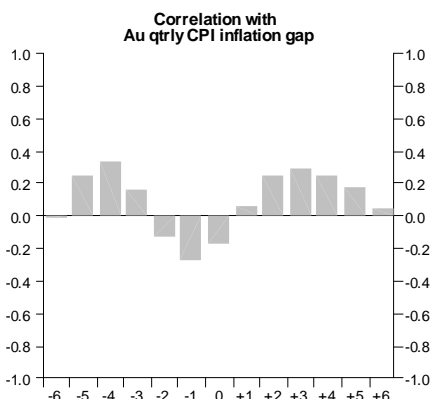
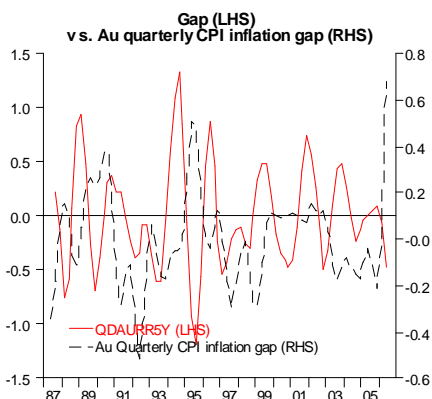
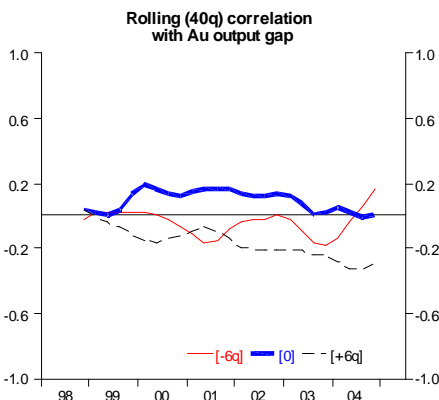
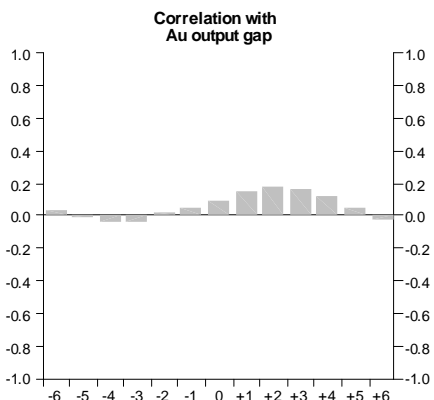
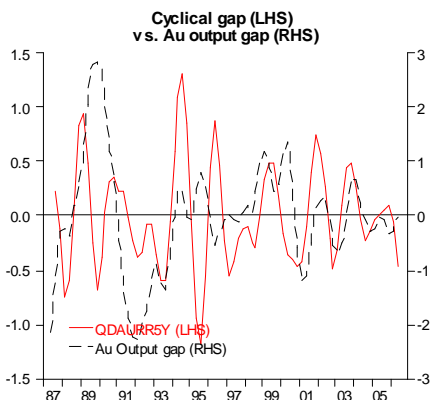
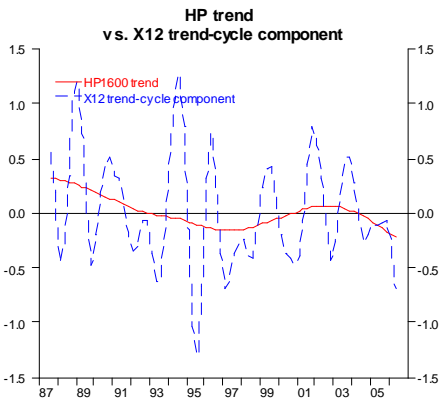
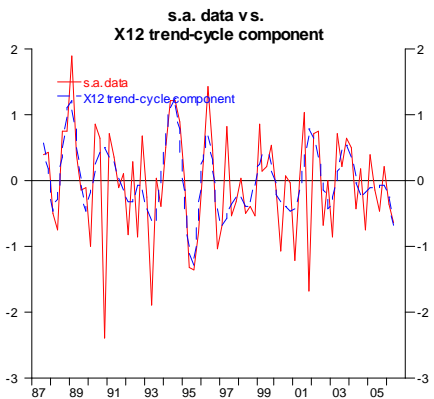
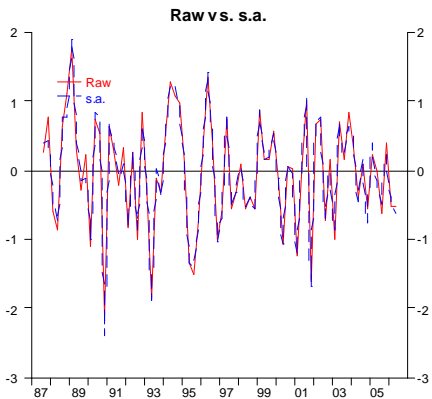
Quarterly difference Australia 5 year rates (HP filtered)



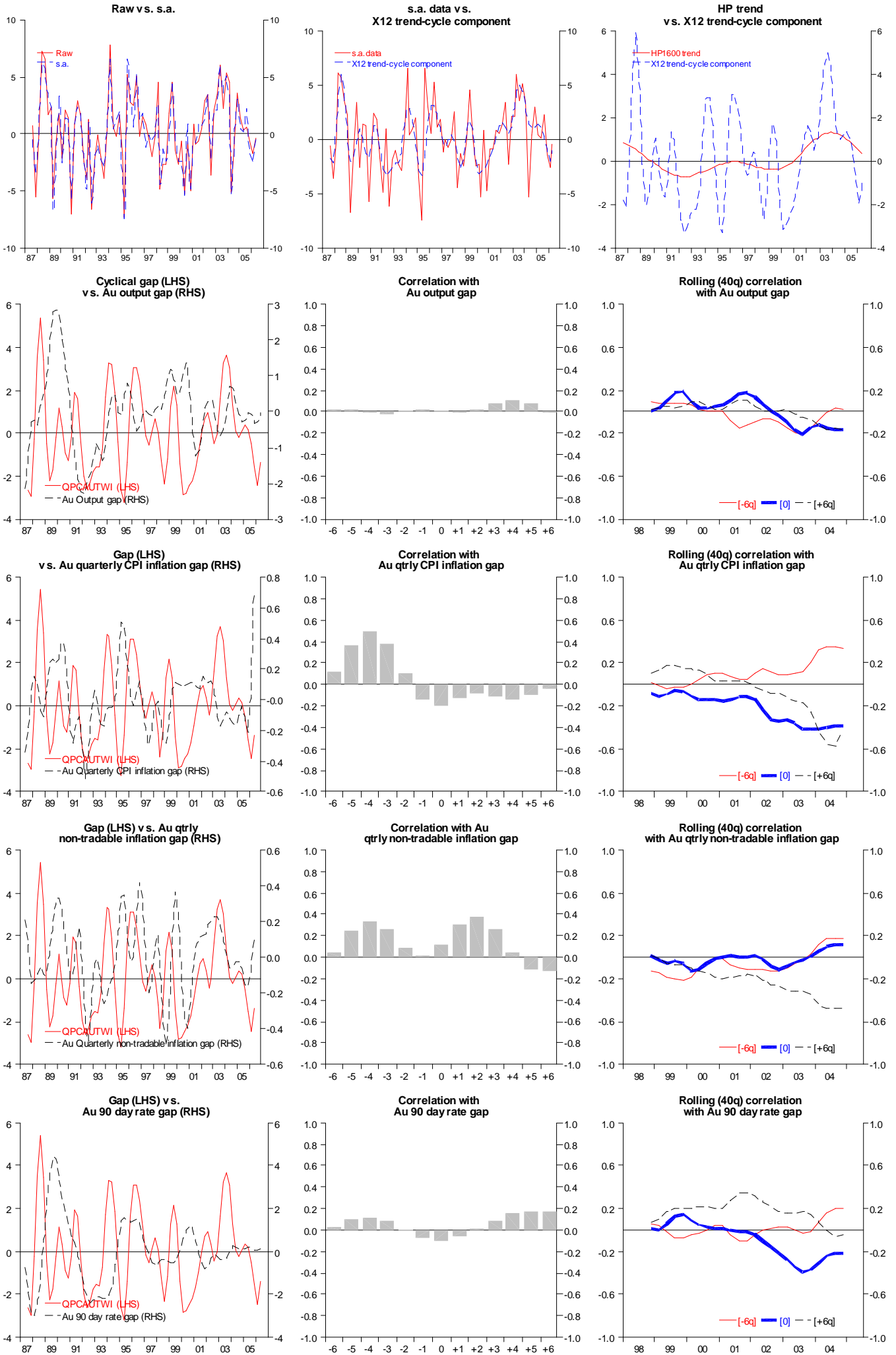
Quarterly difference Australia real 90 day rates (HP filtered)



Quarterly difference Australia real 5 year rates (HP filtered)



QPC Australia nominal trade-weighted index (HP filtered)



QPC Australia IMF real exchange rate (HP filtered)

